



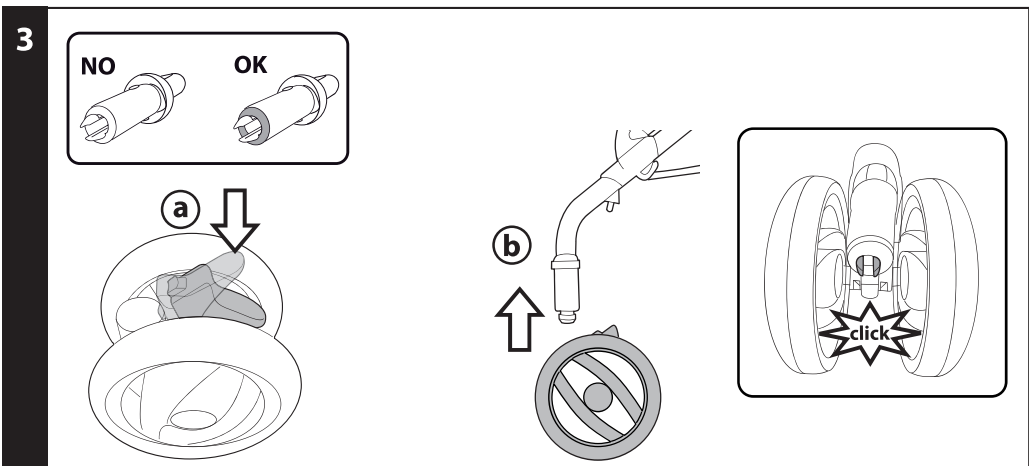
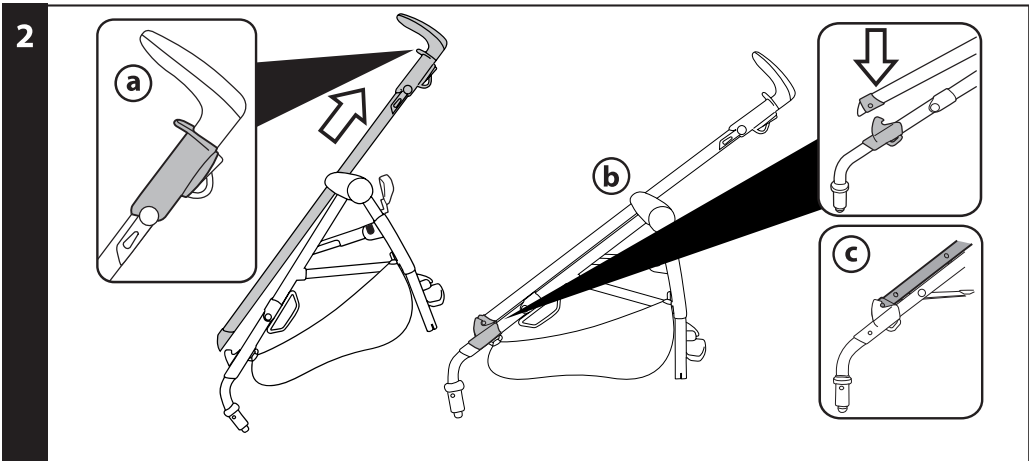
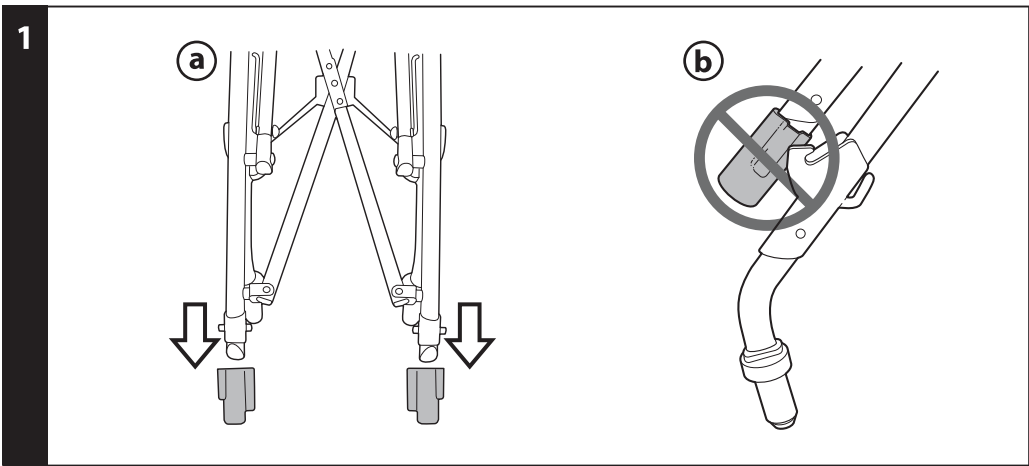
U.S.A./CANADA/AUSTRALIA

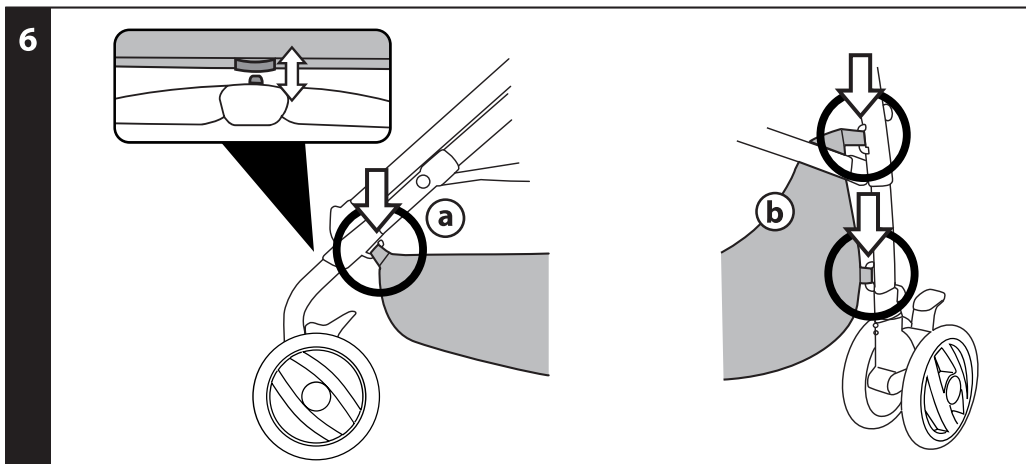
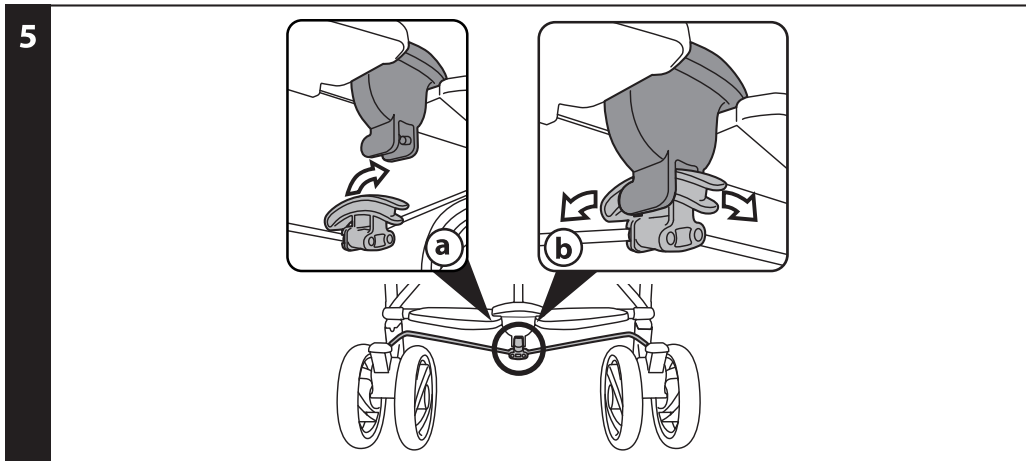
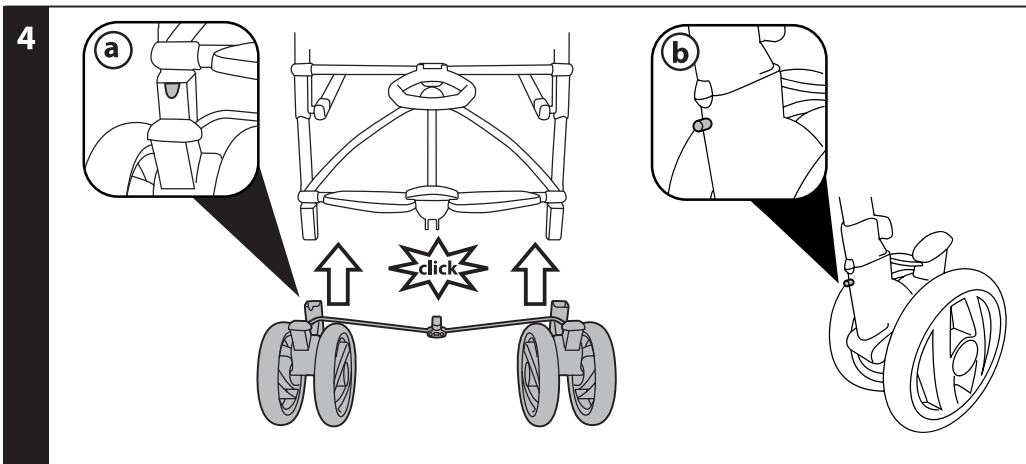
EN Instructions for use

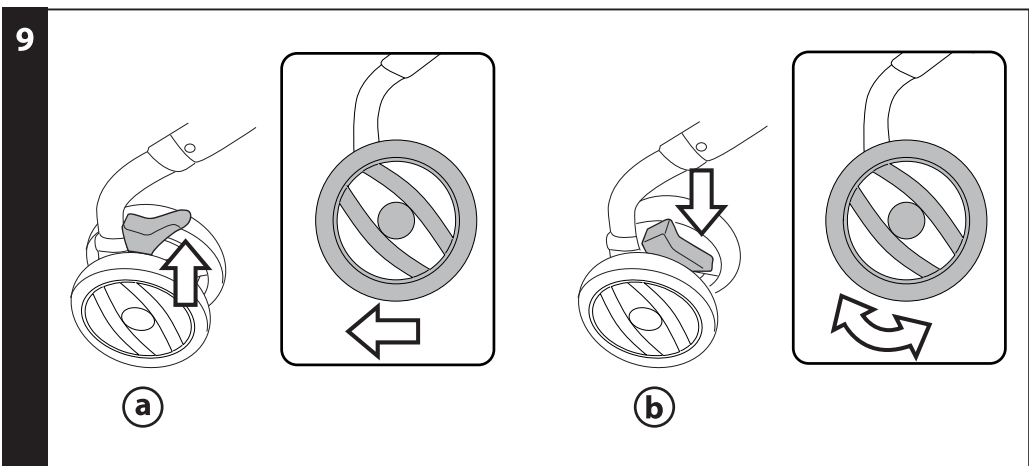
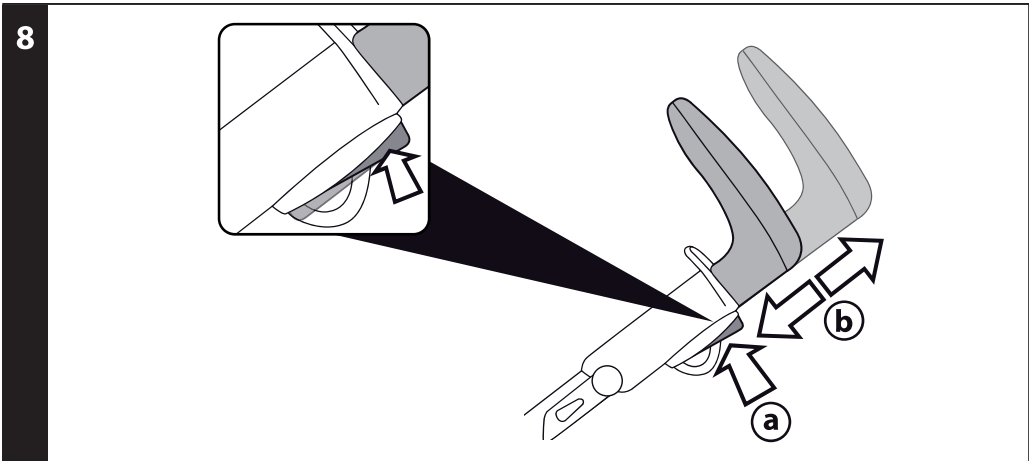
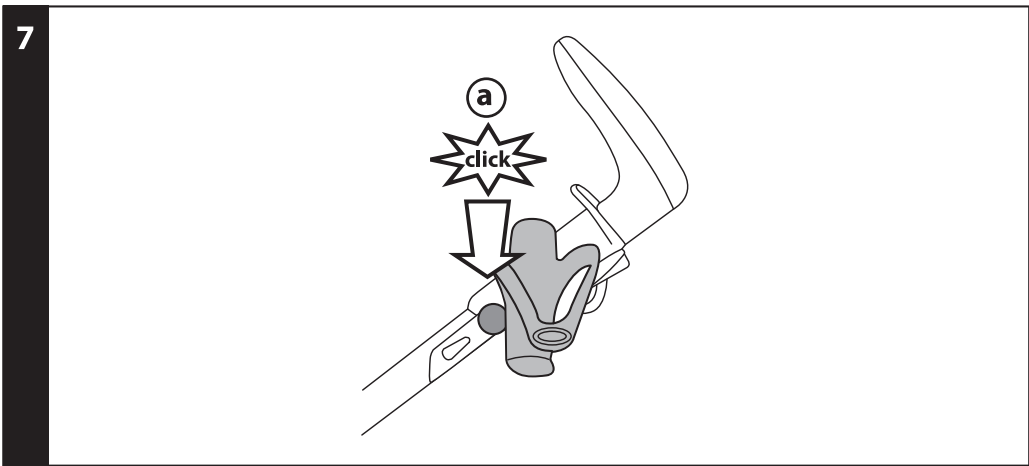
ES Instrucciones de uso

FR Notice d'emploi

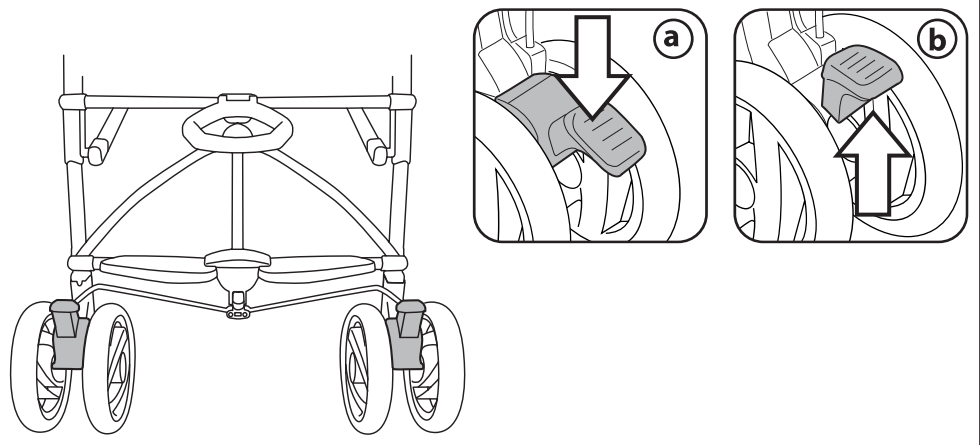
pliko switch compact



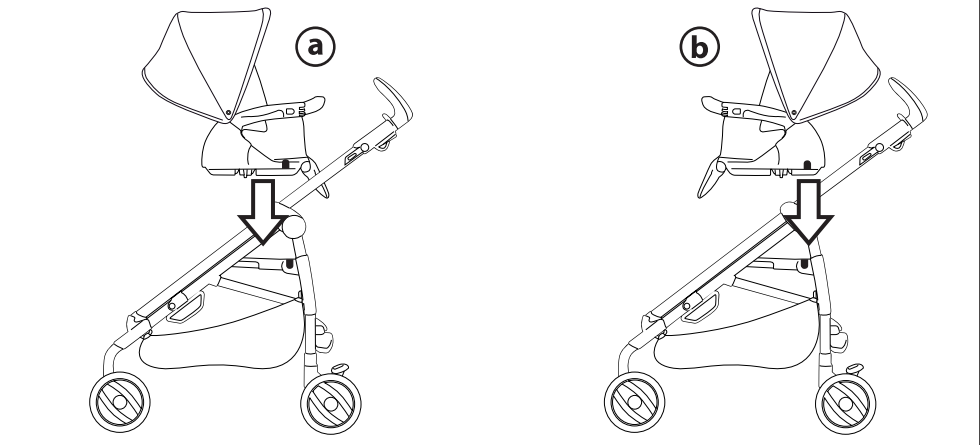




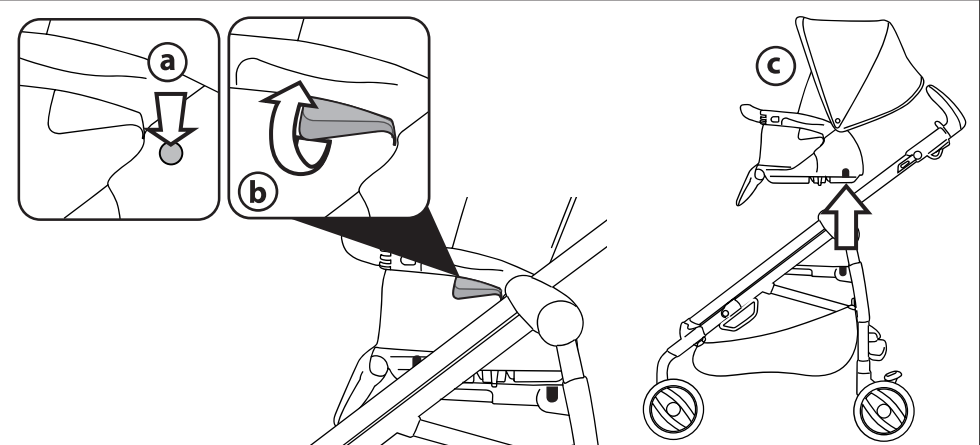
10



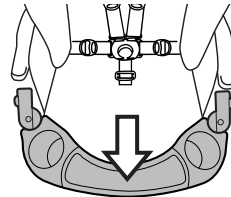
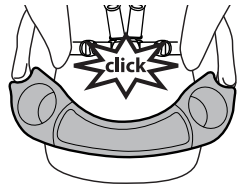
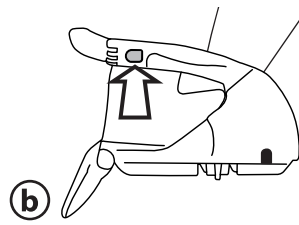
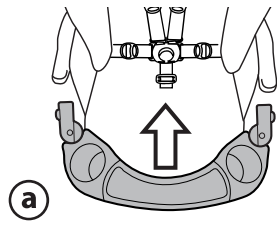
11



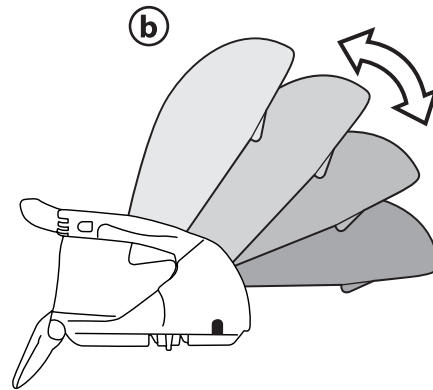
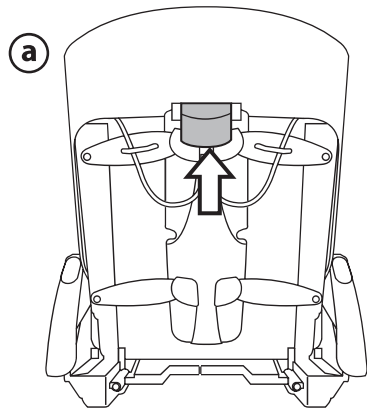
12



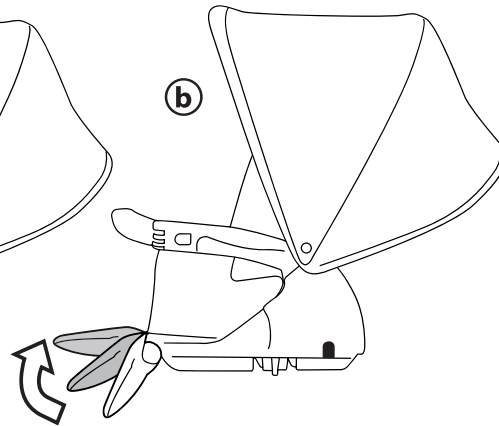
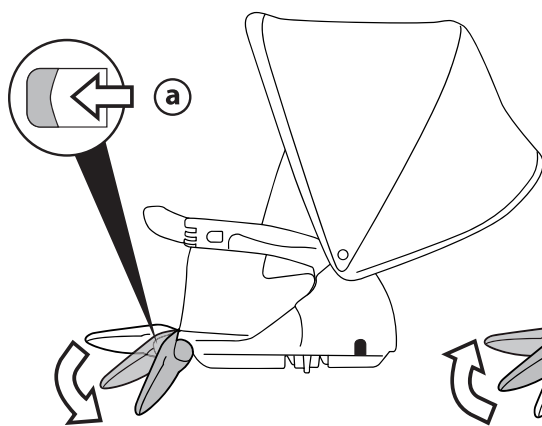
13



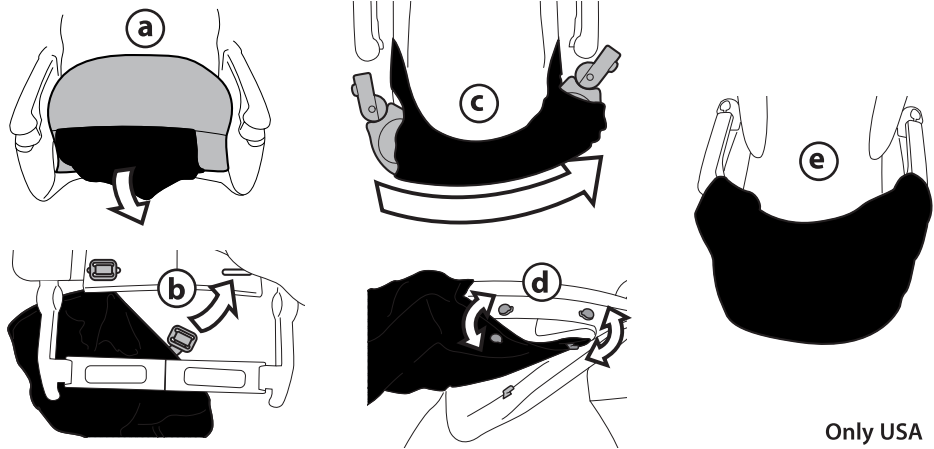
14



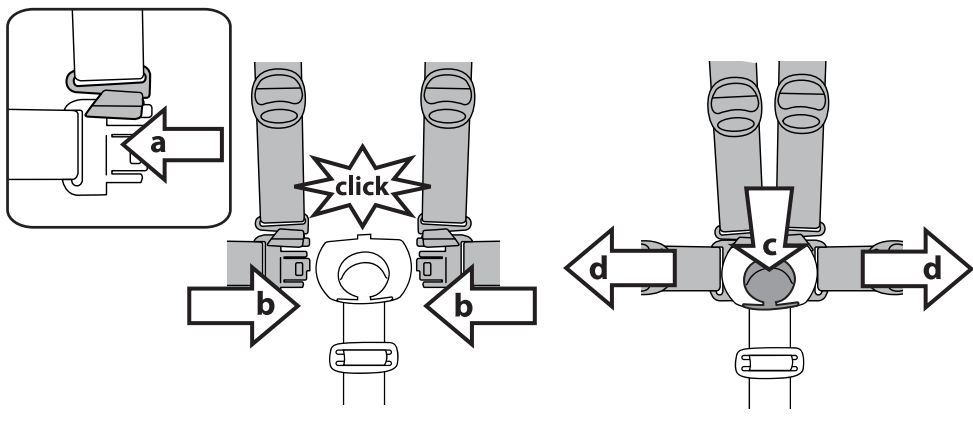
15



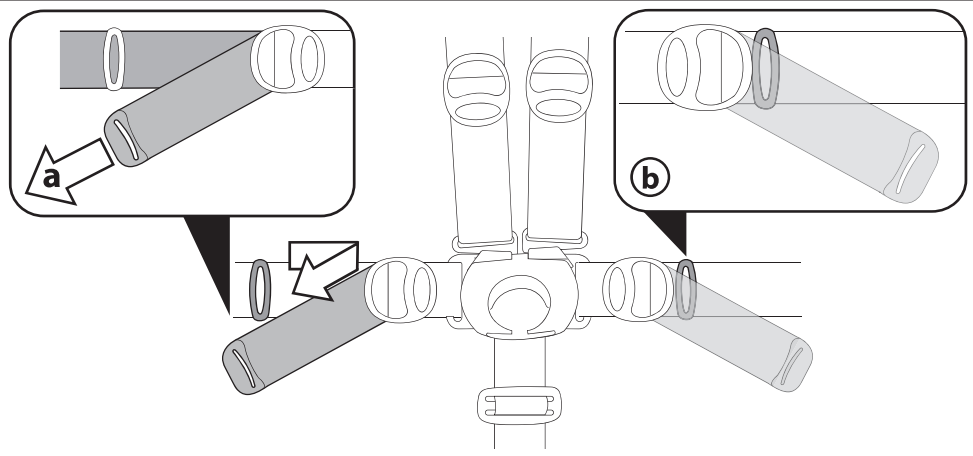
16

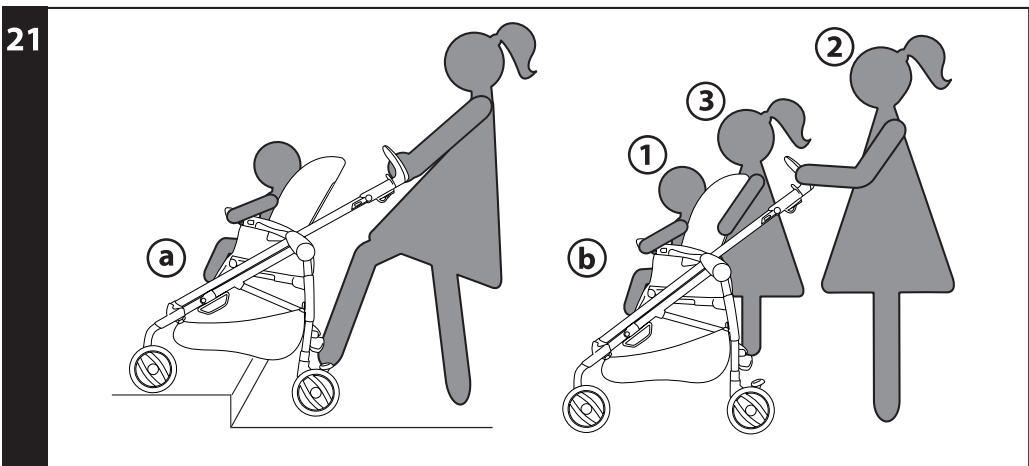
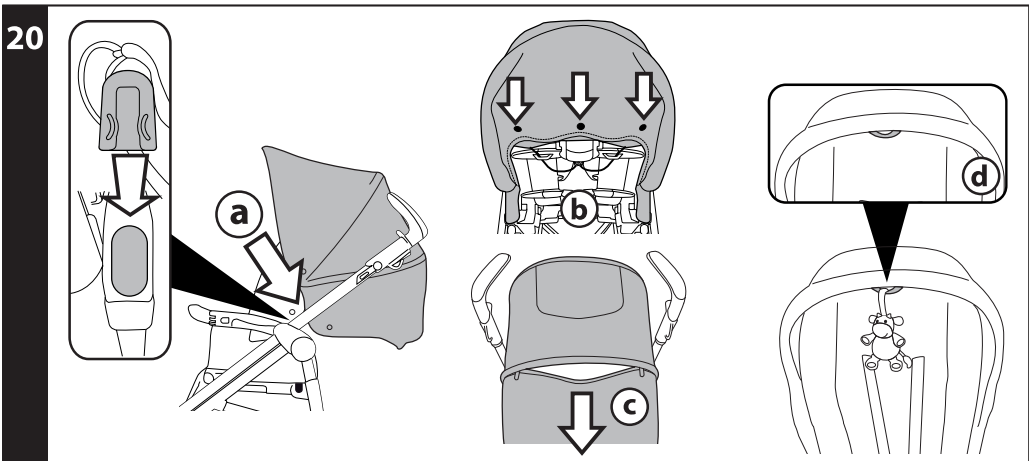
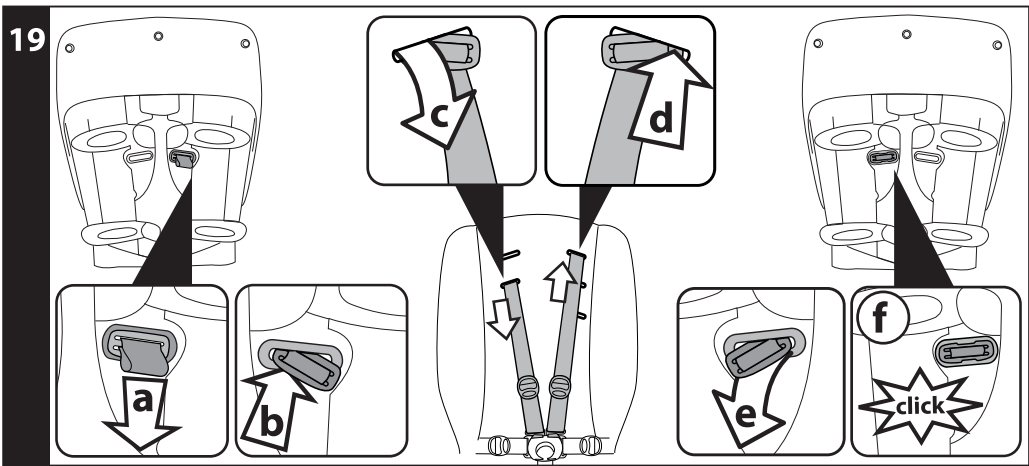


17

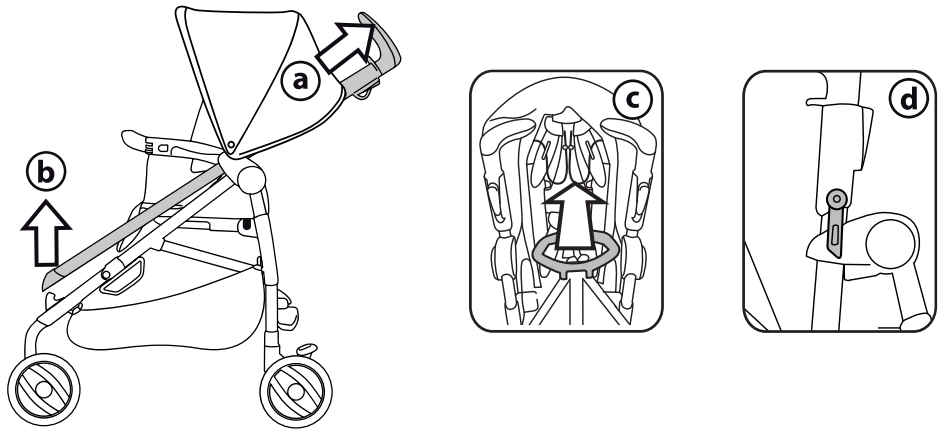


18

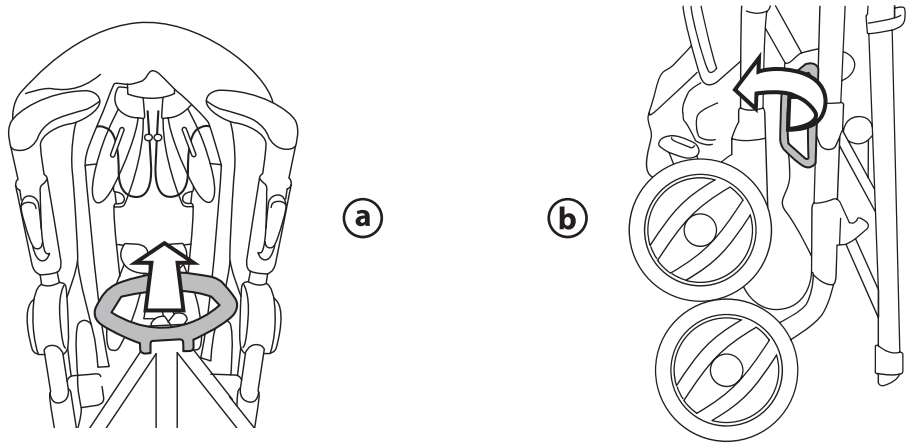




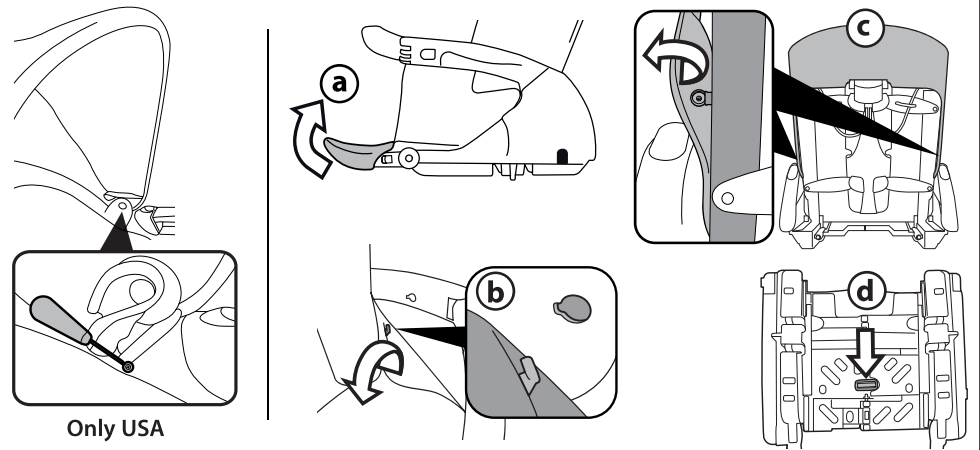
22



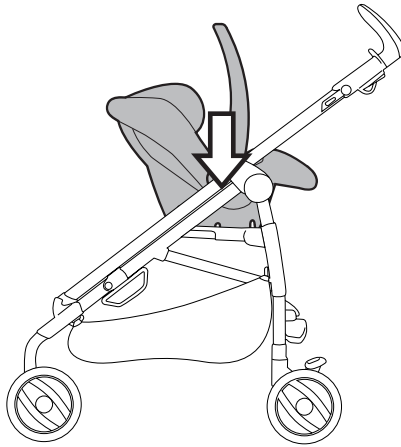
23



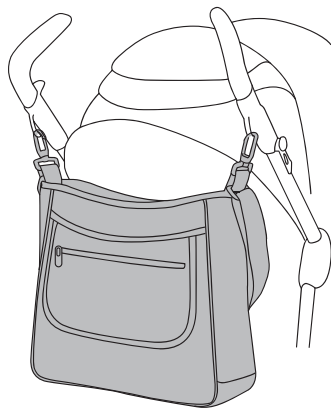
24



25



26



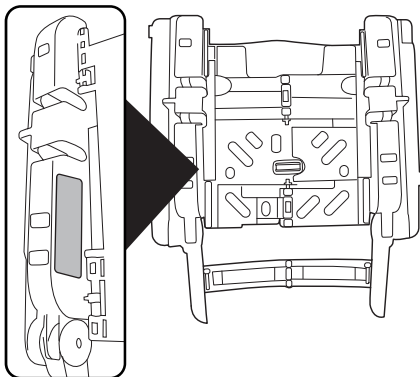
a

b

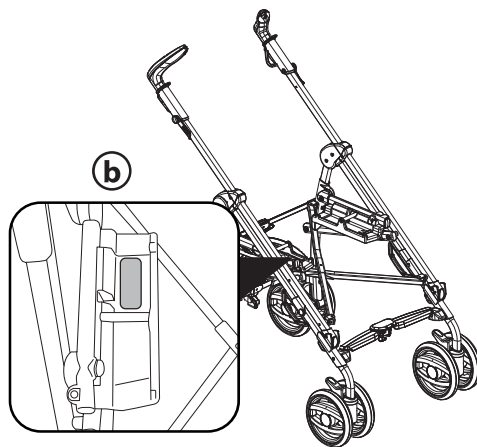


27

a



b



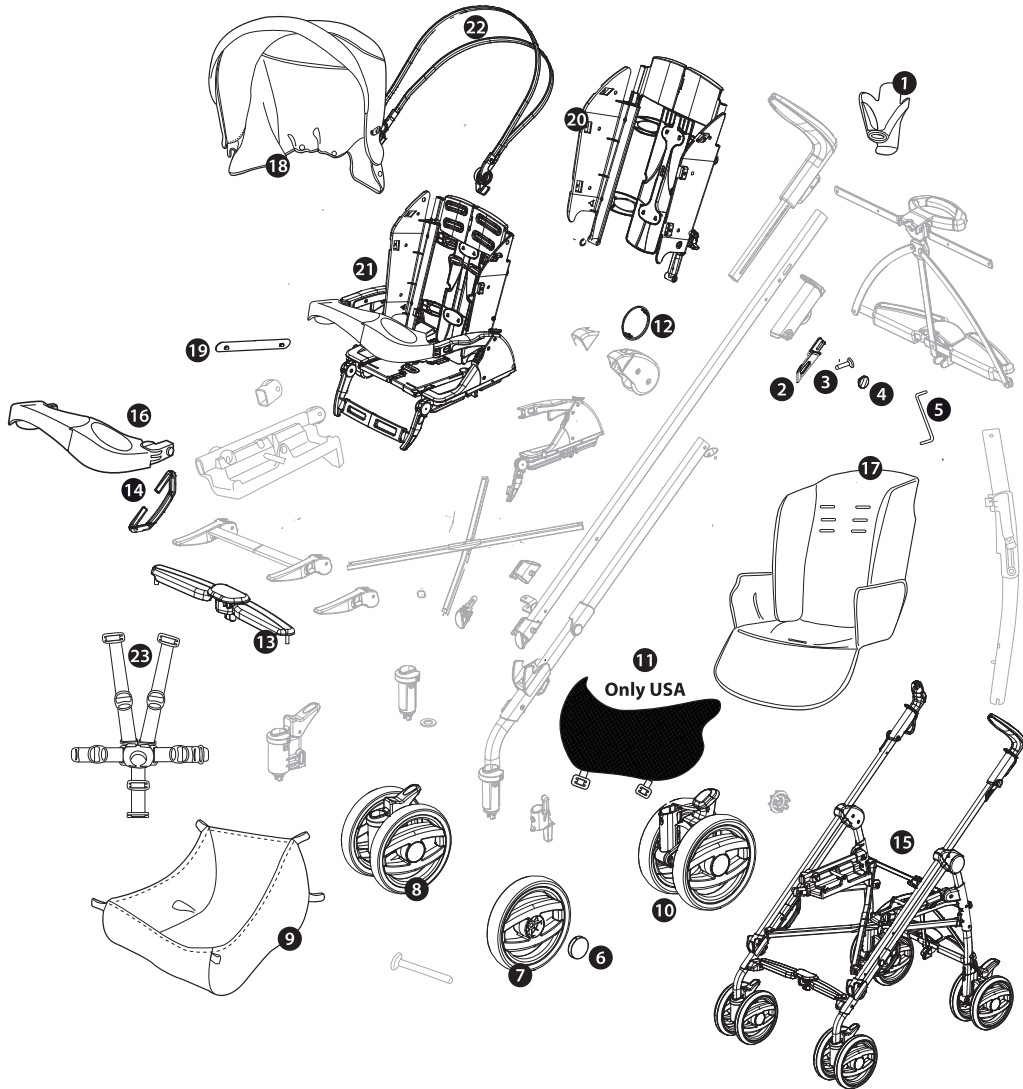
1	SAPI6430NGR	13	SAPI6994L31NGR
2	SPST7060DN	14	SPST6991GR
	SPST7060SN	15	ITPWCONANL65
3	MMVI0438	16	SAPI6828NFRPEEG
4	SPST6396N	17	BSAPSSNA•
5	SOFF0186Z	18	BCAPSS•
6	SPST7031N	19	SPST6975DB
7	SAPI7020GRN		SPST6975SB
8	SAPI5368JJNGR	20	SAPI6977NF
9	IRSHPG00-NY01RE53M	21	ITSWCONANF
10	SAPI6099KNGR	22	ASPI0136NFGL
11	ERSBSW00-RE01M	23	MUCI5P22N
12	SPST7002KDGRS		
	SPST7002KSGRS		

EN Spare parts available in different colours to be specified when ordering.

ES Repuestos disponibles en otros colores que se especificarán en el pedido.

FR Pièces de rechange disponibles en plusieurs couleurs à spécifier dans la demande.

Pliko Switch



EN_English

Thank you for choosing a Peg-Pérego product.

WARNING

- **CAREFULLY READ INSTRUCTIONS AND KEEP FOR FUTURE USE. THE CHILD'S SAFETY COULD BE PUT AT RISK IF THE INSTRUCTIONS ARE NOT FOLLOWED.**

- THIS PRODUCT IS DESIGNED FOR CHILDREN WHOSE MAXIMUM WEIGHT IS 45 POUNDS (20 KG) AND WHOSE MAXIMUM HEIGHT IS 43 INCHES (110 CM). THIS SHOPPER BASKET IS DESIGNED TO CARRY A MAXIMUM WEIGHT OF 11 POUNDS (5 KG). ANY POACH OR POCKET PROVIDED WITH THIS UNIT IS DESIGNED TO CARRY A MAXIMUM WEIGHT OF 0.44 POUNDS (0.2 KG). DO NOT PUT HOT DRINKS IN THE DRINK-HOLDER, NOR ITEMS WEIGHING MORE THAN 0,5 KG (1 LBS).

- FAILURE TO FOLLOW MANUFACTURER'S SPECIFICATIONS OR USE OF ACCESSORIES OTHER THAN THOSE APPROVED BY THE MANUFACTURER MAY CAUSE THE UNIT TO BECOME UNSTABLE.
- AVOID SERIOUS INJURY FROM FALLING OR SLIDING OUT. ALWAYS USE COMPLETE 5 POINT SEAT BELT. NEVER LEAVE YOUR CHILD UNATTENDED.
- ALWAYS USE ALL THE BRAKES WHENEVER PARKED.
- TO AVOID SERIOUS INJURY, WHEN MAKING ADJUSTMENTS ENSURE THE CHILD'S BODY IS CLEAR OF ALL MOVING PARTS.
- ALL OPERATING AND ASSEMBLY PROCEDURES SHOULD BE PERFORMED BY AN ADULT.
- DO NOT LIFT THE STROLLER BY GRIPPING THE FRONT BAR. THE FRONT BAR IS NOT DESIGNED TO WITH STAND LOADS.

- ENSURE THAT THE STROLLER IS OPENED CORRECTLY AND LOCKED IN POSITION OF USE.
- CHECK TO MAKE SURE THAT THE CAR SEAT OR THE BABY CARRIAGE IS CORRECTLY FASTENED TO THE STROLLER (WHERE APPLICABLE).
- DO NOT DRIVE THIS PRODUCT AROUND STAIRS OR STEPS; CARE MUST BE TAKEN IF UNIT IS USED ON STAIRS OR ESCALATORS.
- DO NOT USE THE PRODUCT IF IT HAS BROKEN OR MISSING PARTS.
- DO NOT USE NEAR FIRE OR EXPOSED FLAME.
- CHILD MAY SLIP INTO LEG OPENINGS AND STRANGLE, NEVER USE IN RECLINE CARRIAGE POSITION UNLESS FOOTREST ENCLOSURE IS FULLY INSTALLED/IMPLEMENTED (SEE MANUAL INSTRUCTIONS FOR CORRECT USE).
- WARNING: DO NOT ADD A MATTRESS PAD.
- NOTICE: THIS ARTICLE MEETS OR EXCEEDS ALL REQUIREMENTS COVERED IN ASTM F833 STANDARD AND LATEST REVISIONS.

FEATURES OF THE ITEM

- The item has a specific serial number.
- Pliko Switch is a stroller with a reversible seat: facing the person pushing or facing forwards.
- Pliko Switch is made up of two elements: Pliko Switch CHASSIS and Pliko Switch SEAT.

COMPONENTS OF THE ITEM

- Check the contents of the packaging and if you have any questions please contact the Assistance Service see warranty for details.
- Pliko Switch Chassis: a basket, 2 swiveling or locking front wheels, 2 rear wheels with a central brake bar and a drink holder.
 - Pliko Switch Seat: front bar; hood; cover; rain canopy.

INSTRUCTIONS

- 1 PACKING PROTECTION: before opening the chassis remove the protection (fig_a), otherwise it will not open correctly (fig_b).
- 2 OPENING: Raise the levers on the two handles together (fig_a) and pull upwards until the chassis is completely open (fig_b). Check that the chassis is correctly opened: the side tubes must be locked together (fig_c).

- 3 **FITTING THE FRONT WHEELS:** First check that the washer is in place, as shown in the figure, lower the levers on the two front wheels (fig_a) and push them until they click into place (fig_b).
- 4 **FITTING THE REAR WHEELS:** Push the wheels until they click into place (fig_a) and check that they are properly attached (fig_b).
- 5 Finally, attach the element in the centre of the brake bar to the chassis (fig_a) and check that it has slotted into place properly (fig_b).
- 6 **FITTING THE BASKET:** Slip the loops onto the hooks at the front (fig_a) and the rear (fig_b).
- 7 **FITTING THE CUP HOLDER:** insert the cup holder on the corresponding peg and press down until it clicks into place (fig_a). The cup holder can be attached to either side of the chassis.
- 8 **ADJUSTABLE HANDLES:** Pliko Switch compact: To raise or lower the handles, hold the button down (fig_a) and adjust them (fig_b).
- 9 **FIXED OR SWIVELLING FRONT WHEELS:** Lift the levers to prevent the wheels from swiveling (fig_a) and lower them to allow the wheels to swivel (fig_b). On uneven surfaces, the wheels should be set to their fixed position.
- 10 **BRAKES:** Press a brake lever to immobilize the chassis (fig_a) and lift the lever to release it (fig_b).
- 11 **MOUNTING THE SEAT TO THE CHASSIS:** the reversible seat can be attached to the chassis either facing the person pushing the stroller (fig_a), or facing forwards (fig_b), place the seat on the chassis so that it is aligned with the relative symbols and press downwards with both hands until you hear two clicks confirming that it has locked into position. Ensure the seat is correctly secured by attempting to pull it upwards by gripping the front bar.
- 12 **REMOVING THE SEAT FROM THE CHASSIS:** Hold down the two round buttons on the sides of the seat (fig_a), press the two levers under the armrests (fig_b) and pull up the seat (fig_c) until it is released. The seat can be removed from and re-attached to the chassis when there is a child in it.
- 13 **FRONT BAR:** To attach the front bar, slide the connections into the ends of the armrests and push them in until they click into place (fig_a). To remove the front bar, press the two buttons and pull it outwards (fig_b). To make it easier for the child to get in and out, it is also possible to open the front bar on one side only.
- 14 **BACKREST:** to recline the backrest lift the lever (fig_a) and choose one of the 4 positions (fig_b).
- 15 **FOOTREST:** to lower the footrest push the two levers downwards and then push the footrest downwards (fig_a); to raise the footrest lift it upwards (fig_b).
- 16 **BABY SAFE:** pull the Baby Safe system out from under the leg rest (fig_a), attach it to the seat (fig_b), fit the front bar (fig_c), unbutton the fabric covering at the side and then attach the Baby Safe system to the sides of the armrests (fig_d). A fitted Baby Safe system is shown in Figure E.
- 16 **FIVE POINT SAFETY HARNESS:** To fasten it, push the two waist strap buckles (with the shoulder straps attached – arrow_a) into the leg divider until they click into place (arrow_b). To unfasten it, press the round button in the centre of the buckle (arrow_c) and pull the waist straps out (arrow_d).
- 18 To tighten the waist strap, pull on both sides in the direction of the arrow (arrow_a). To loosen it do the opposite. The waist strap can be tightened as far as the safety lock (fig_b).
- 19 To adjust the height of the safety harnesses, release the two buckles on the rear of the backrest. Pull the shoulder straps towards you (arrow_a) until the buckles are released and insert them in the backrest loops (arrow_b). Remove the shoulder straps from the sack (arrow_c) and insert them in the most appropriate loop (arrow_d), then re-attach the two buckles on the rear of the backrest (arrow_e) The buckles are securely attached when a click is heard (fig_f).
- 20 **HOOD:** to attach the hood insert the connections into the sides of the seat (fig_a) and then fasten the buttons on the rear of the backrest (fig_b). To remove the hood: disengage the connections and unbutton from the backrest. To raise the hood: pull it towards you; to close the hood: push it back. To convert the hood into a sun canopy, open the double zipper (fig_c) and unfasten the buttons on the rear of the backrest. The child's favorite toy can be hung from the loop on the hood (fig_d).
- 21 **REAR LEDGE:** the rear ledge makes it easier to negotiate kerbs or level differences with the stroller (fig_a) and can also be used to transport a second child (fig_b). To use the stroller with two children, apply the brakes, position the smaller child in the seat and attach the safety harness (1). Grip the handles (2) and help the second child to climb onto the ledge (3).
- 22 **FOLDING UP:** The stroller can be folded without the seat, with the seat facing the person pushing, or with the seat facing forwards. If the seat is facing the person pushing: before folding it, lower the backrest completely. If the seat is facing forwards: before folding the stroller raise the backrest, then lower it once the stroller is folded. To fold the stroller, set the front wheels to their fixed position and close the hood (if fitted). Lift the two levers on the handles one at a time until they click, push downwards to

- release the side tubes (fig_a-b) and pull the central handle upwards (fig_c) until the safety catches engage (fig_d).
- 23 **TRANSPORT:** the stroller can be carried by the central handle, keeping the front wheels fixed (fig_a) or by the side handle (fig_b).
- 27 **REMOVABLE COVERS:** Pull the fabric covering off the ledge (fig_a), release the attachments of the fabric covering from the armrests (fig_b), unfasten the buttons on the sides of the backrest (fig_c) and remove the leg divider strap from above by pushing it from under the seat (fig_d).

GANCIO Matic SYSTEM

- 25 **Ganciomatic** is a fast and practical system that allows you to attach the Primo Viaggio car seat or the Pliko Switch seat to the Ganciomatic Base of the chassis in one quick step.
- Place the item on the Ganciomatic Base and press down with both hands until it clicks into place.
- Always apply the chassis or stroller brake before attaching and removing products (refer to the respective instruction manuals). Check that the child transport unit is properly attached.

ACCESSORY

- 26 **BORSA Diaper-Changing Bag** with pad for changing the baby (fig_a). Attaches to the stroller.
- RAIN CANOPY:** Rain canopy to the hood (fig_b).

SERIAL NUMBERS

- 27 **Pliko Switch** reports information as at the date of manufacture of the product.
- Product name, date of manufacture and serial number of the seat (fig_a) and of the carriage (fig_b).
- This information is required for any complaints.

CLEANING AND MAINTENANCE

PRODUCT MAINTENANCE: protect from the weather: water, rain, or snow; prolonged and continuous exposure to bright sunlight may give rise to colour changes of various different materials; store this product in a dry place.

CLEANING THE CHASSIS: periodically clean all plastic parts with a damp cloth. Do not use solvent or similar cleaning products; keep all metal parts dry to prevent rusting; keep moving parts clean (adjustment mechanisms, locking mechanisms, wheels, ...) and free of

dust and sand and, if necessary, lubricate with light machine oil.

CLEANING THE RAIN CANOPY: wash with a sponge and soapy water; do not use detergents.

CLEANING FABRIC PARTS: brush fabric parts to remove dust and wash by hand at a maximum temperature of 30°C; do not wring; do not use chlorine bleach, do not iron; do not dry clean; do not apply solvent-based stain removers and do not dry in a tumble dryer.



PEG-PÉREGO S.p.A.

Peg Pérego can make changes at any time to the models described in this publication for technical or commercial reasons.

PEG-PÉREGO AFTER-SALES SERVICE

If any parts of the item get lost or damaged, only use genuine Peg Pérego spare parts. For any repairs, replacements, information on the products and sales of genuine spare parts and accessories, contact the Peg Pérego Assistance Service and state the serial number of the product, if present.

USA

tel. 800.671.1701 fax 260.471.6332
call us toll free 1.800.671.1701
website www.pegperego.com

CANADA

tel. 905.839.3371 fax 905.839.9542
call us toll free 1.800.661.5050
website www.pegperego.com

This document was created with Win2PDF available at <http://www.win2pdf.com>.
The unregistered version of Win2PDF is for evaluation or non-commercial use only.
This page will not be added after purchasing Win2PDF.