



U.S.A./CANADA

EN Instructions for use

ES Instrucciones de uso

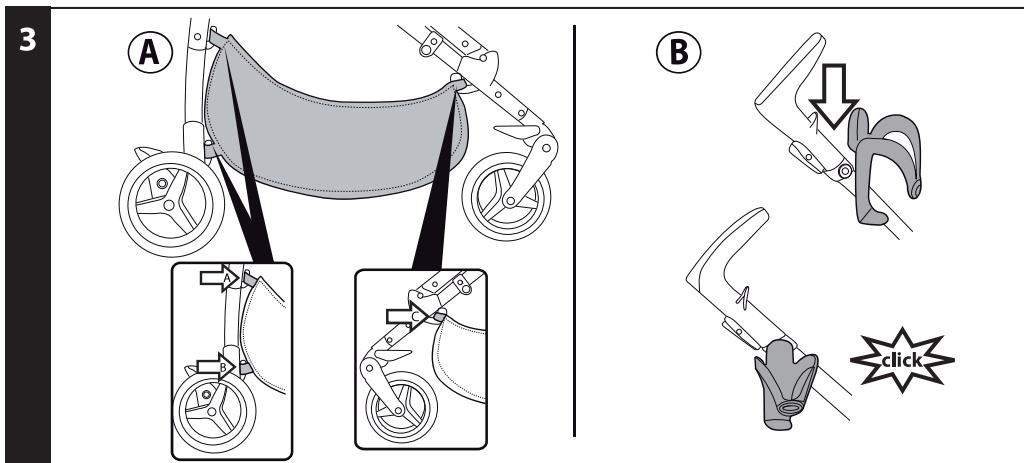
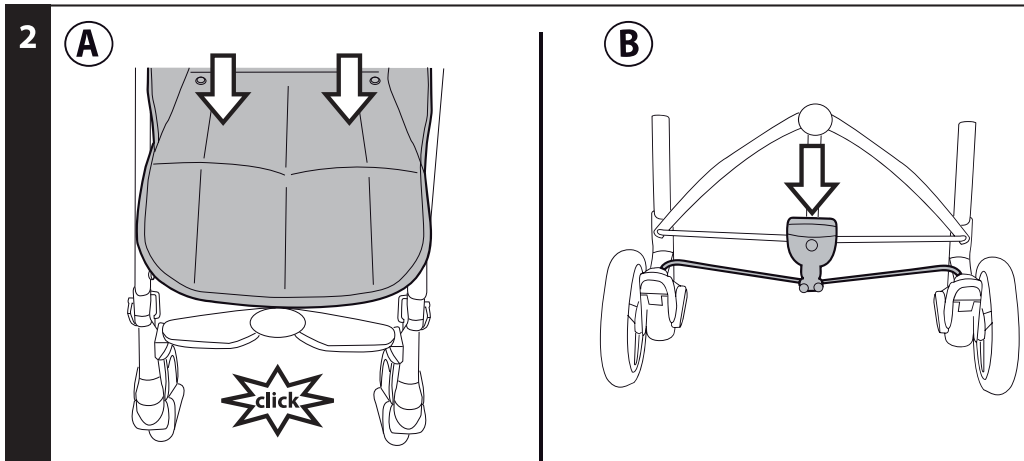
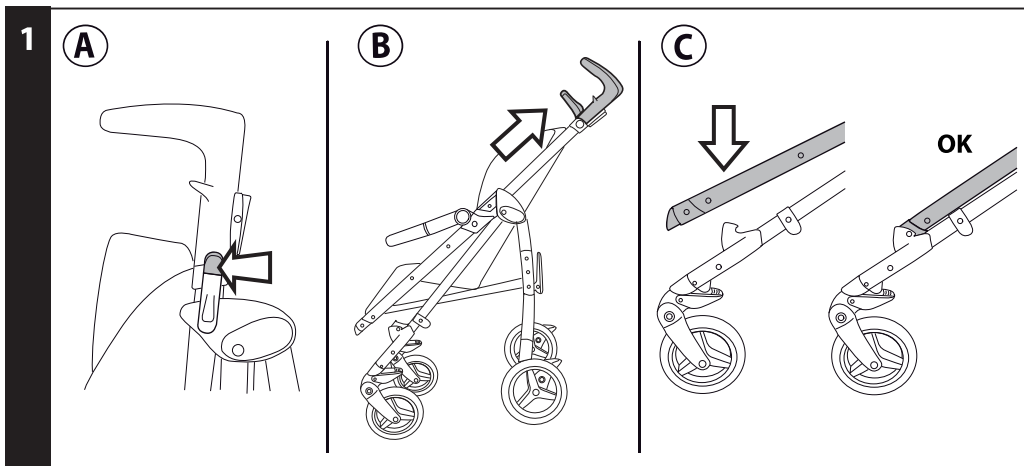
FR Notice d'emploi

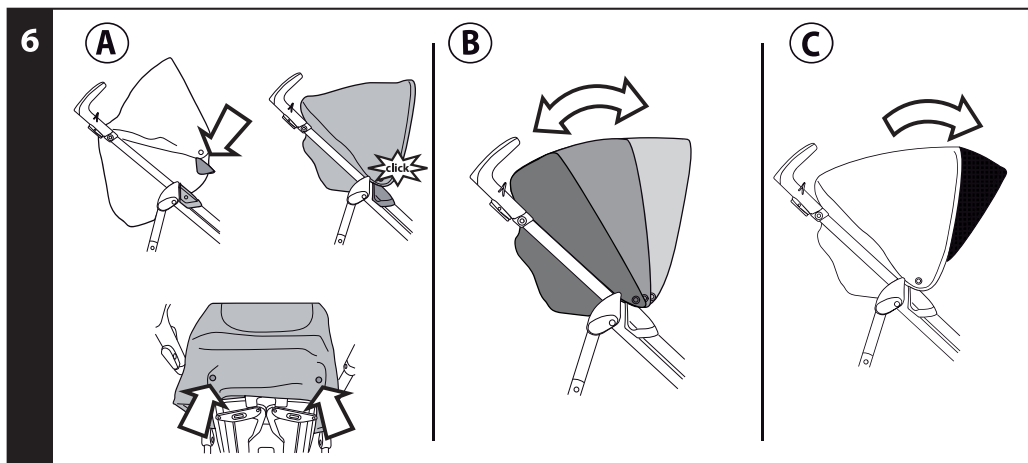
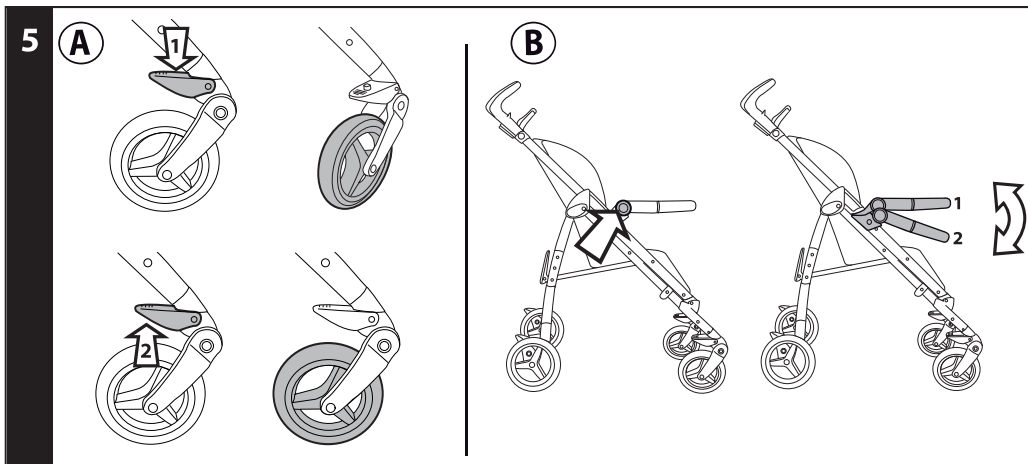
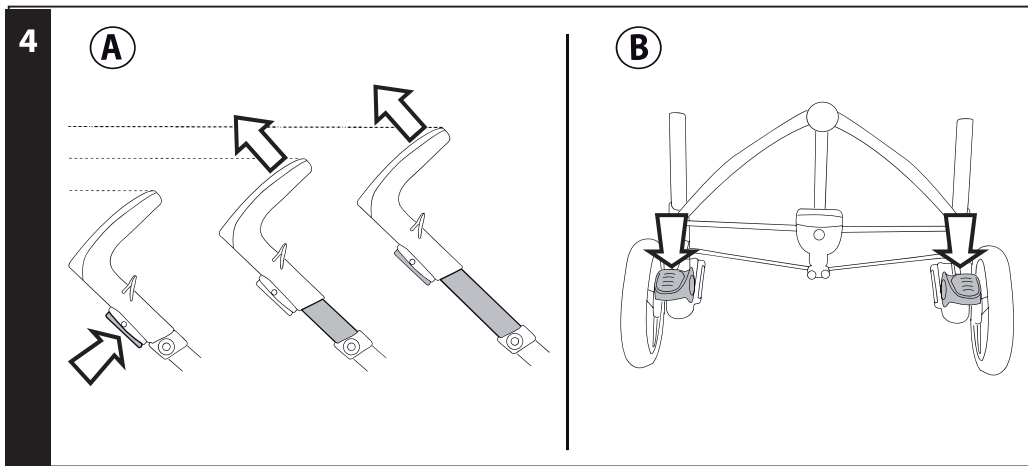
SI

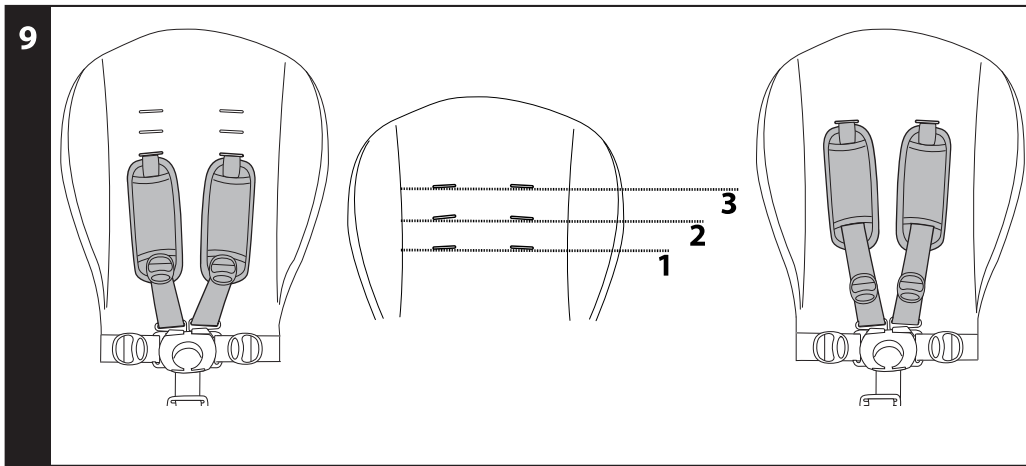
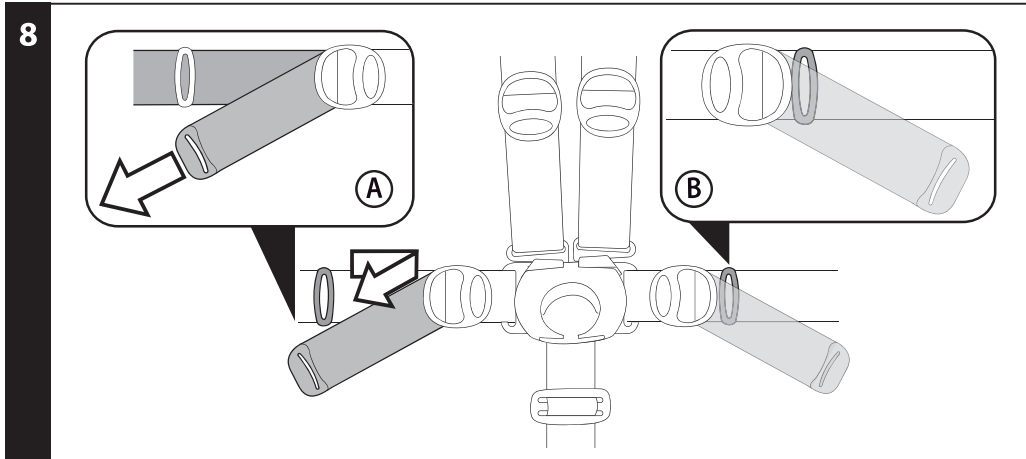
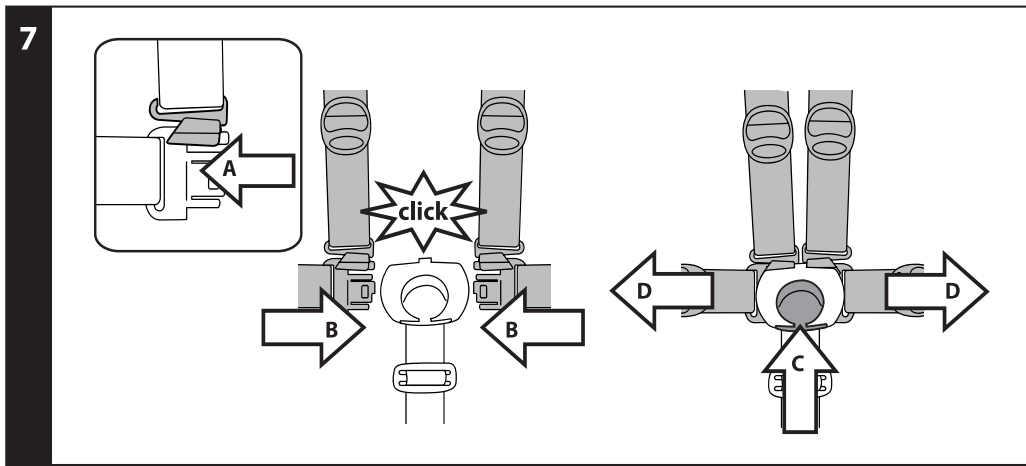


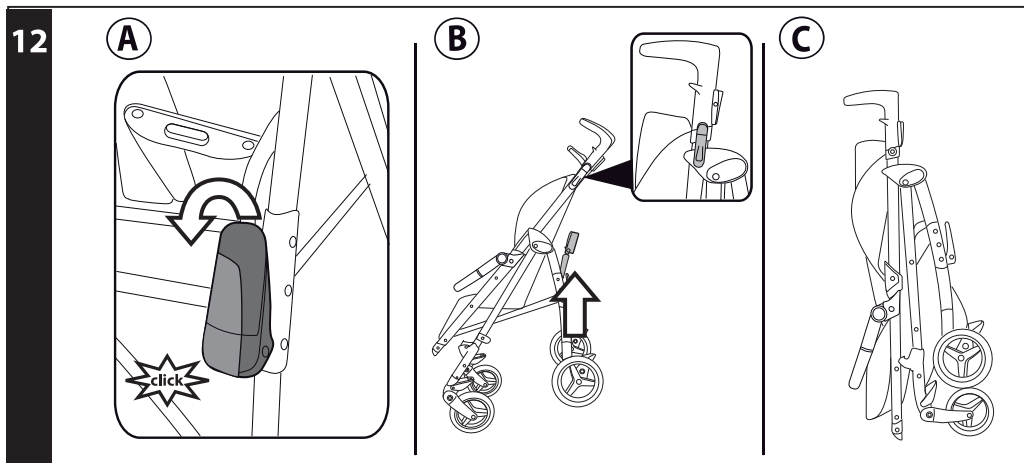
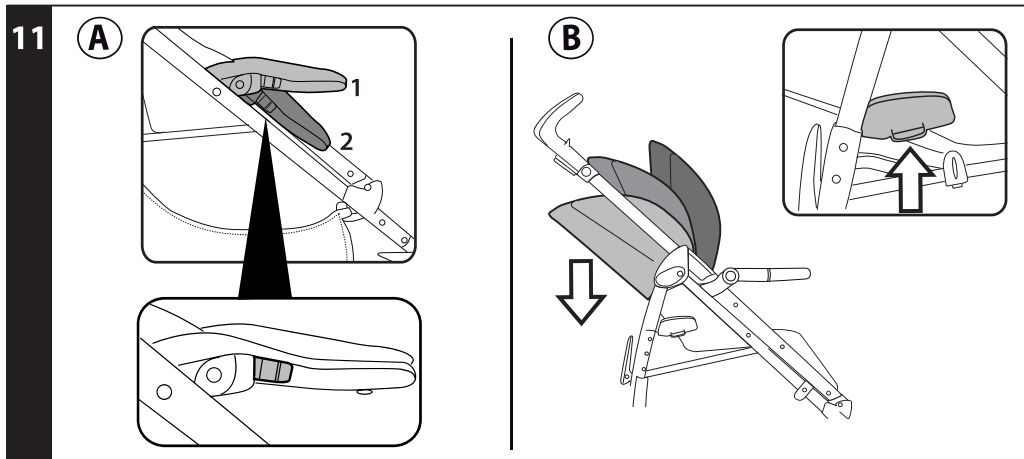
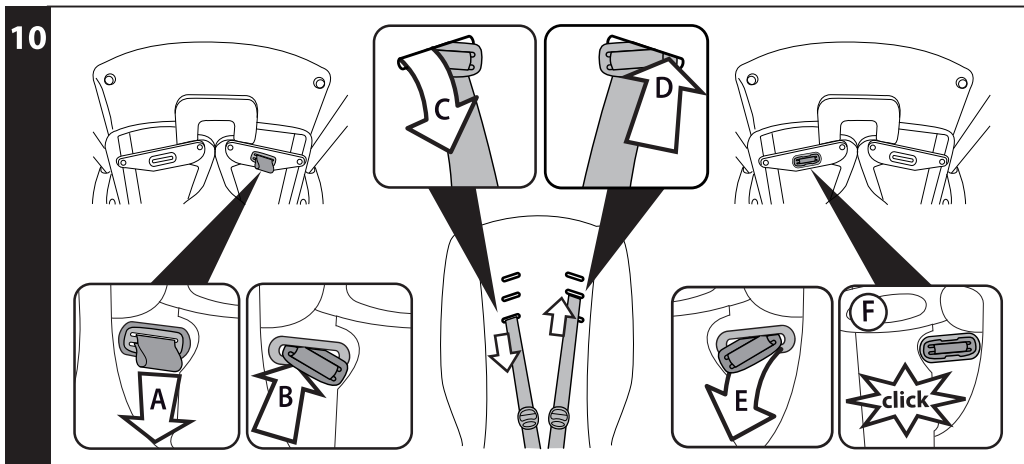
Peg-Pérego

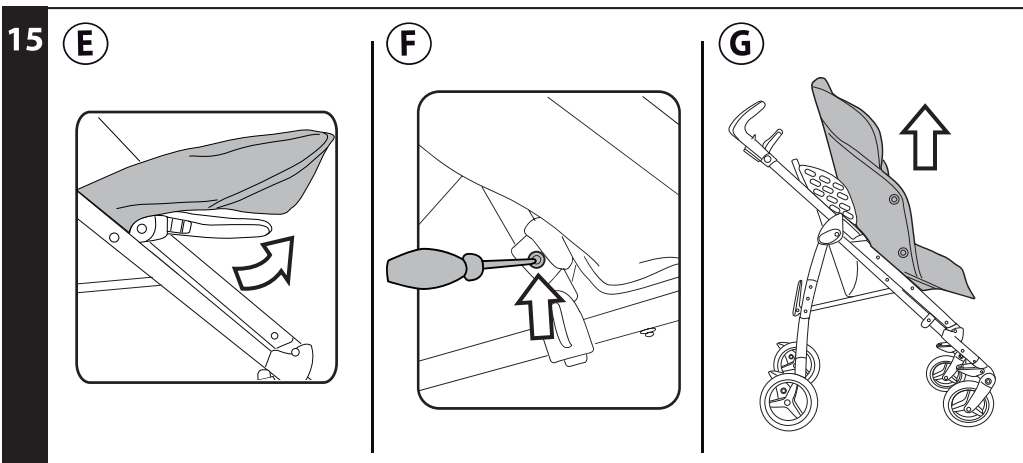
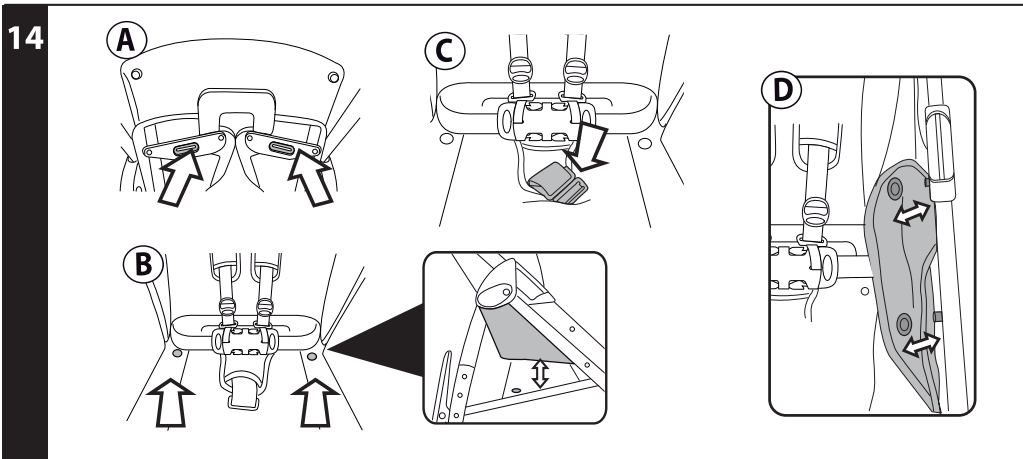
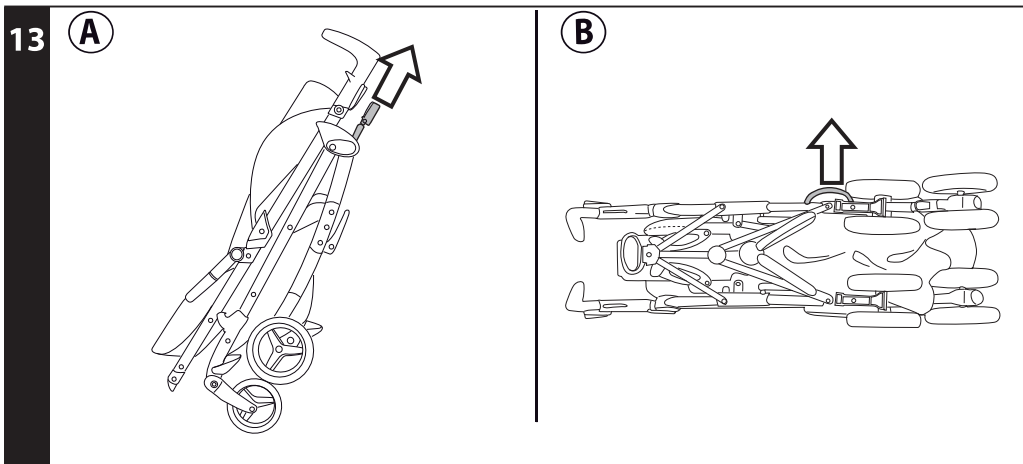






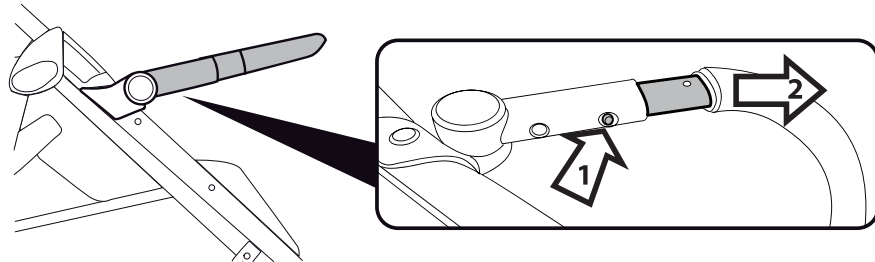






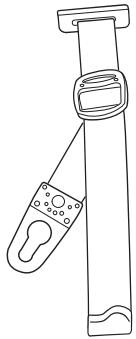


16

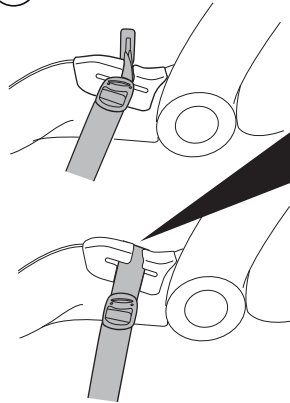


17

(A)



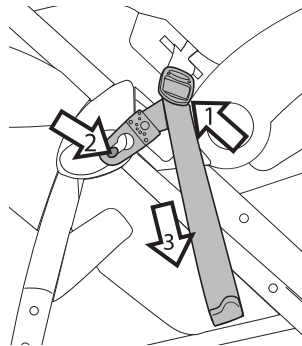
(B)



OK

18

(C)

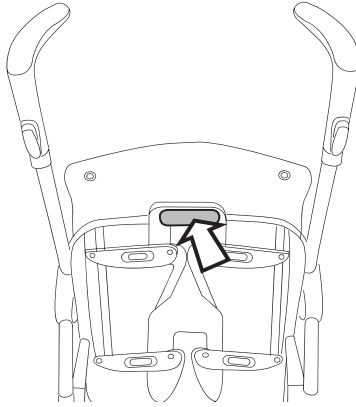


(D)

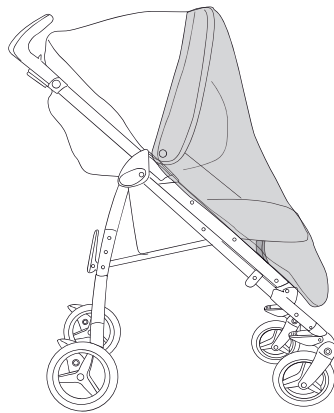
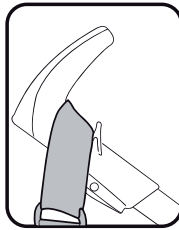
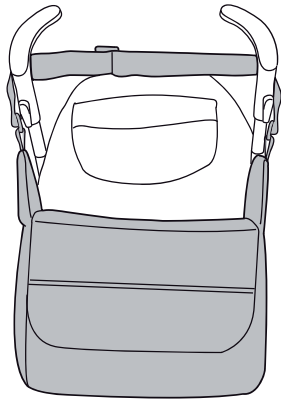




19

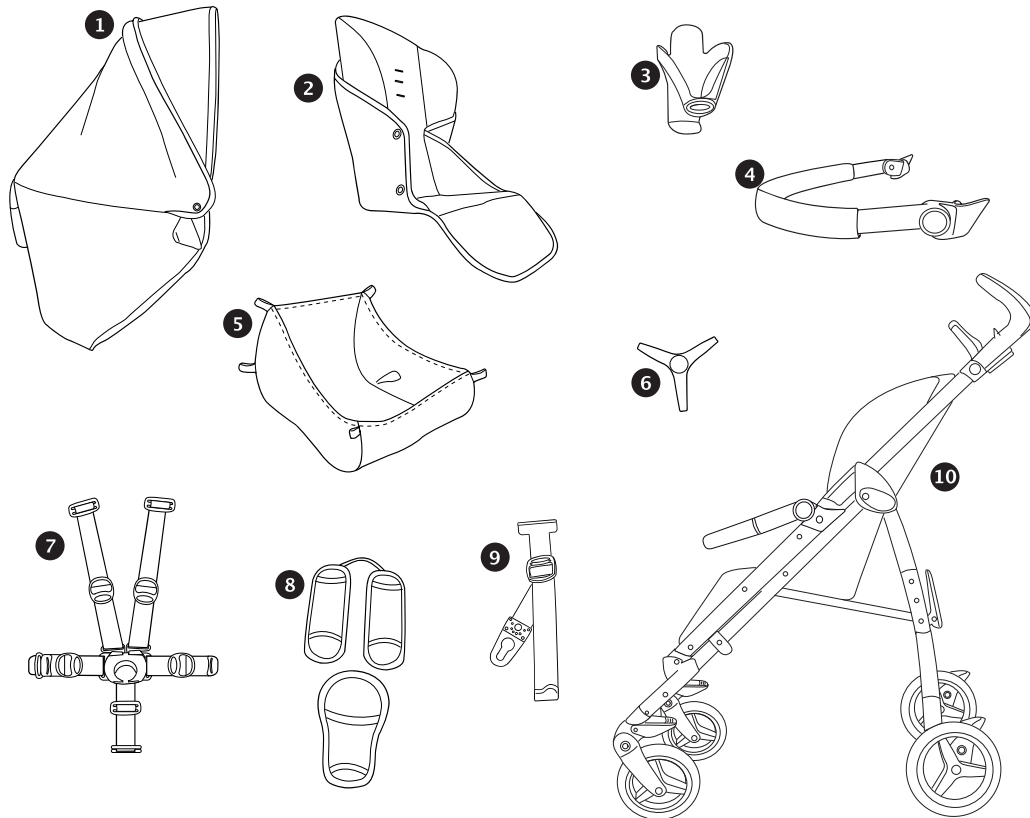


20





SÍ



- | | |
|-----------------------|------------------|
| 1) BCAPSI... | 6) SPST6692SN |
| 2) BSAPSI... | 7) MUCI5P22N |
| 3) SAPI6430NGR | 8) BAKPSI... |
| 4) SAPI6837NGR | 9) MUCI0128N |
| 5) ERSHSI00-NY01RE01M | 10) ITPASNNANL65 |

EN• Spare parts available in different colours to be specified when ordering.
ES• Repuestos disponibles en otros colores que se especificarán en el pedido.
FR• Pièces de rechange disponibles en plusieurs couleurs à spécifier dans la demande.





EN_English

Thank you for choosing a Peg-Pérego product.

WARNING

- **CAREFULLY READ INSTRUCTIONS AND KEEP FOR FUTURE USE.**
- **THE CHILD'S SAFETY COULD BE PUT AT RISK IF THE INSTRUCTIONS ARE NOT FOLLOWED.**
- THIS PRODUCT IS DESIGNED FOR A CHILD WHOSE MAXIMUM WEIGHT IS 45 POUNDS (20 KG) AND WHOSE MAXIMUM HEIGHT IS 43 INCHES (110 CM). THIS SHOPPER BASKET IS DESIGNED TO CARRY A MAXIMUM WEIGHT OF 11 POUNDS (5 KG). ANY CUPHOLDER EVENTUALLY PROVIDED WITH THIS UNIT IS DESIGNED TO CARRY A MAXIMUM WEIGHT SPECIFIED ON THE CUPHOLDER ITSELF. ANY POACH OR POCKET PROVIDED WITH THIS UNIT IS DESIGNED TO CARRY A MAXIMUM WEIGHT OF 0.44 POUNDS (0.2 KG).
- ALWAYS KEEP THE FRONT BAR FITTED TO THE STROLLER.
- FAILURE TO FOLLOW MANUFACTURER'S SPECIFICATIONS OR USE OF ACCESSORIES OTHER THAN THOSE APPROVED BY THE MANUFACTURER MAY CAUSE THE UNIT TO BECOME UNSTABLE.
- AVOID SERIOUS INJURY FROM FALLING OR SLIDING OUT. ALWAYS USE COMPLETE 5 POINT SEAT BELT.
- NEVER LEAVE YOUR CHILD UNATTENDED.
- ALWAYS USE ALL THE BRAKES WHENEVER PARKED.
- TO AVOID SERIOUS INJURY, WHEN MAKING ADJUSTMENTS ENSURE THE CHILD'S BODY IS CLEAR OF ALL MOVING PARTS.
- ALL OPERATING AND ASSEMBLY PROCEDURES SHOULD BE PERFORMED

- BY AN ADULT.
- ENSURE THAT THE STROLLER IS OPENED CORRECTLY AND LOCKED IN POSITION OF USE.
- DO NOT DRIVE THIS PRODUCT AROUND STAIRS OR STEPS; CARE MUST BE TAKEN IF UNIT IS USED ON STAIRS OR ESCALATORS.
- DO NOT USE THE PRODUCT IF IT HAS BROKEN OR MISSING PARTS.
- DO NOT USE NEAR FIRE OR EXPOSED FLAME.
- WARNING: THE FRONT BAR MUST ALWAYS BE IN POSITION 1 (RAISED) WHEN THE STROLLER IS OPEN AND DURING USE. IT SHOULD ONLY BE IN POSITION 2 (LOWERED) WHEN THE STROLLER IS FOLDED UP.
- NOTICE: THIS ARTICLE MEETS OR EXCEEDS ALL REQUIREMENTS COVERED IN ASTM F833 STANDARD AND LATEST REVISIONS.

PRODUCT PARTS

Check the package contents and contact our Customer Service for any claim.

- The Si CLASSICO stroller comprises: 2 swivel or locking front wheels, 2 rear wheels, a basket, a drink holder, a hood, 2 shoulder padding sections for the harness and 1 leg divider strap, 2 adaptor straps for attaching the Car Seat.

INSTRUCTIONS

- 1 OPENING: To open the stroller, press the lever on the left hand side (fig_a), grip the handles, pull upwards and at the same time lift the stroller (fig_b). Check that the stroller is properly opened by making sure that the side clips are correctly fastened (fig_c).
- 2• If the straps are not fasten correctly, press onto the seat (fig_a) until it clicks into place. Then push down into PUSH (fig. b) with your foot and lift the front bar by one position (section 5b).
- 3 BASKET: To fit the basket, pull the loops over rear hooks A and B and front hook C (fig_a).
CUP HOLDER: It can only be fitted to the right hand side of the stroller, using the clip which is already present on the chassis. To fit the cup holder, push until it clicks into place (fig_b).





4 **HANDLE ADJUSTMENT:** The handles can be set at 3 different heights. To move them into the required position, press the button and simultaneously pull the handle upwards. To lower them, press the button and push the handle down (fig_a).

BRAKE: To set the brake on the stroller, lower the lever on the rear wheel unit with your foot. To release the brake, lift the lever (fig_b). When stationary, always apply the brake.

5 **SWIVEL WHEELS:** the wheels are already fixed into the stroller.

In order to make the wheels swivel, the lever (arrow 1) must be lowered. To secure the wheels, move the lever to the opposite direction (arrow 2). The rear wheels are fixed.

WARNING: Always keep the front bar fitted to the stroller.

FRONT BAR: It is already attached to the stroller. It can be put in 2 positions:

POSITION 1: Use.

POSITION 2: Folding.

To adjust it, press the two side buttons at the same time (fig_b).

6 **HOOD:** To fit the hood, click the fasteners onto the appropriate points and button down the hood on the rear of the stroller's backrest (fig_a).

The hood can be set in 3 different positions (fig_b) by simply pulling it forwards or backwards.

The section of netting can be pulled out from the hood to protect the child from the sun (fig_c) and easily replaced back inside when it is no longer needed.

7 **5-POINT SAFETY HARNESS:** to fasten, insert the two buckles of the waist strap (with attached shoulder straps, arrow a) into the leg divider strap until they click into place (arrow b). To unfasten, push the round button placed in center of the buckle upwards (arrow_c) and pull the waist strap outwards (arrow d).

8 To tighten the waist strap, pull on both sides in the direction of the arrow (Fig. a). To loosen it do the opposite. The waist strap can be tightened as far as the safety lock (Fig. b).

9 It is possible to set the safety harness at 3 different heights, depending on how tall the child is. As the child gets bigger, the harness must be moved to a higher position.

10 To adjust the height of the safety harnesses, release the two buckles on the rear of the backrest. Pull the shoulder straps towards you (arrow a) until the buckles are released and insert them in the backrest loops (arrow b). Remove the shoulder straps from the sack (arrow

c) and insert them in the most appropriate buckle (arrow d), then reattach the two buckles behind the backrest (arrow e). The buckles are securely attached when a click is heard (fig f).

11 **LEG REST ADJUSTMENT:** The leg rest can be set in 2 different positions. To lower the leg rest, pull the two side levers downwards and at the same time lower the leg rest. To raise the leg rest, push it upwards until it clicks into position.

BACKREST ADJUSTMENT: The backrest can be set in 3 positions: To lower the backrest, lift the levers on both sides at the same time and lower it, locking it in the position required. To lift the backrest, push it upwards.

12 **FOLDING UP:** Before folding up the stroller, it is best to lower the front bar to position 2. Lower the fold release lever (fig_a) until it clicks" then pull the central handlebar (fig_b). Make sure the stroller is folded correctly. The small lever on the left side must be fastened correctly. Once the stroller is folded, it shall stand by itself (fig_c).

13 **TRANSPORT:**The stroller can be moved with ease (with the front wheels fixed) using the central handle (fig_a). It can also be carried using the side handle (fig_b).

14 **REMOVABLE COVERS:** To remove the cover of the stroller:

Release the two buckles on the rear of the backrest (fig_a).

Release the two buttons on the seat (fig_b).

Pull the buckle of the crotch strap out from underneath (fig_c).

Release the buttons from the side of the sack (fig_d).

15 Pull the sack off the footrest (fig_e).

To remove the safety harness, release the screws on both sides, using a screwdriver and pliers to hold the nut still (fig_f).

Pull the sack upwards (fig_g).

ATTACHING THE PRIMO

VIAGGIO SIP 30-30 (Usa) - PRIMO

VIAGGIO SIP (Canada, manufactured

after 20 September 2007) :

It is necessary to apply the brake on the stroller.

Do not attach the car seat to the stroller when the child is in it.

Only attach the car seat facing the person pushing the stroller.

It is necessary to attach the safety straps to the car seat before mounting it on the stroller.





16 Push the button beneath the armrest and extend the front bar, then simultaneously pull it out from both sides.

WARNING: Only extend the front bar when attaching the Car Seat.

17 To attach the straps (which are identical) to the car seat, to start with it is important to position them correctly, as shown in the figure (fig_a). After this, insert them in the side slots of the car seat (fig_b).

Since there is already a hood on the car seat, for greater ease of use it is possible to remove the one on the stroller.

Put the backrest of the stroller in the 2nd central position (see paragraph 11).

18 Position the car seat on the seat of the stroller and slot it into place, without ever releasing it.

Slacken the harness by lifting the buckle (fig_c1), clip the slot of the strap onto the catch on the stroller (fig_c2) and tighten it firmly (fig_c3). Figure D shows a correctly attached car seat.

Carry out the same procedure on the other side of the stroller.

To release the car seat from the stroller:

Loosen the buckle by raising it and release the slot of the strap from the catch on the stroller.

Do not remove the straps from the stroller.



SERIAL NUMBERS

19 The Stroller Si has all the following relevant information behind the backrest: product name, date of manufacture and serial number.

This information is required for any complaints.

ACCESSORIES

20 CHANGINGBAG: bag with pad for changing the baby. Can be attached to the stroller.

RAIN CANOPY: can be fastened to the hood.

CLEANING AND MAINTENANCE

PRODUCT MAINTENANCE: protect from the weather: water, rain, or snow; prolonged and continuous exposure to bright sunlight may give rise to colour changes of various different materials; store this product in a dry place.

CLEANING THE CHASSIS: periodically clean all plastic parts with a damp cloth. Do not use

solvent or similar cleaning products; keep all metal parts dry to prevent rusting; keep moving parts clean (adjustment mechanisms, locking mechanisms, wheels, ...) and free of dust and sand and, if necessary, lubricate with light machine oil.

CLEANING THE RAIN CANOPY: wash with a sponge and soapy water; do not use detergents.

CLEANING FABRIC PARTS: brush fabric parts to remove dust and wash by hand at a maximum temperature of 30°C; do not wring; do not use chlorine bleach, do not iron; do not dry clean; do not apply solvent-based stain removers and do not dry in a tumble dryer.



PEG-PÉREGO S.p.A.

Peg Pérego can make changes at any time to the models described in this publication for technical or commercial reasons.

PEG-PÉREGO AFTER-SALES SERVICE

If any parts of the item get lost or damaged, only use genuine Peg Pérego spare parts. For any repairs, replacements, information on the products and sales of genuine spare parts and accessories, contact the Peg Pérego Assistance Service and state the serial number of the product, if present.



USA:

tel. 800.671.1701

fax: 260.471.6332

call us toll free: 1.800.671.1701

web site: www.pegperego.com

CANADA

tel. 905.839.3371

fax 905.839.9542

call us toll free 1.800.661.5050

website www.pegperego.com

Peg-Perego reserves the right to make any necessary changes or improvements to the products shown at any time without notice.



This document was created with Win2PDF available at <http://www.win2pdf.com>.
The unregistered version of Win2PDF is for evaluation or non-commercial use only.
This page will not be added after purchasing Win2PDF.