



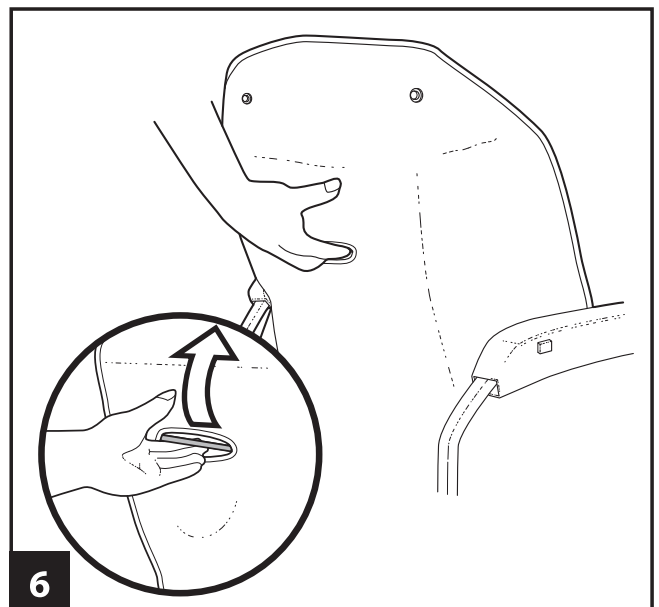
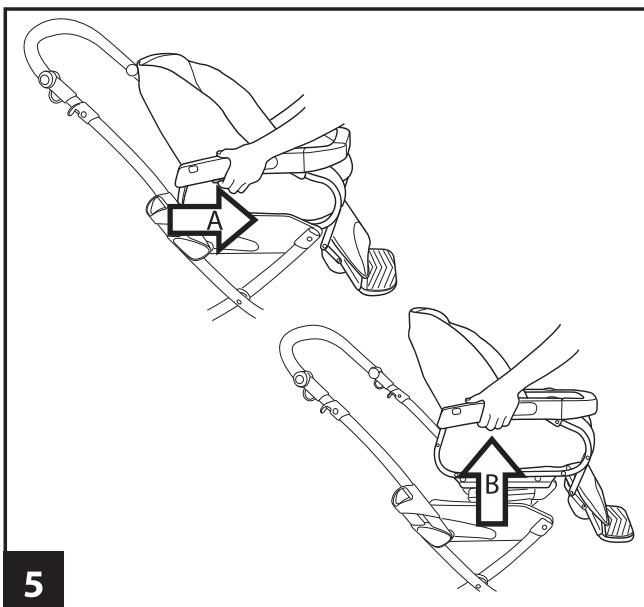
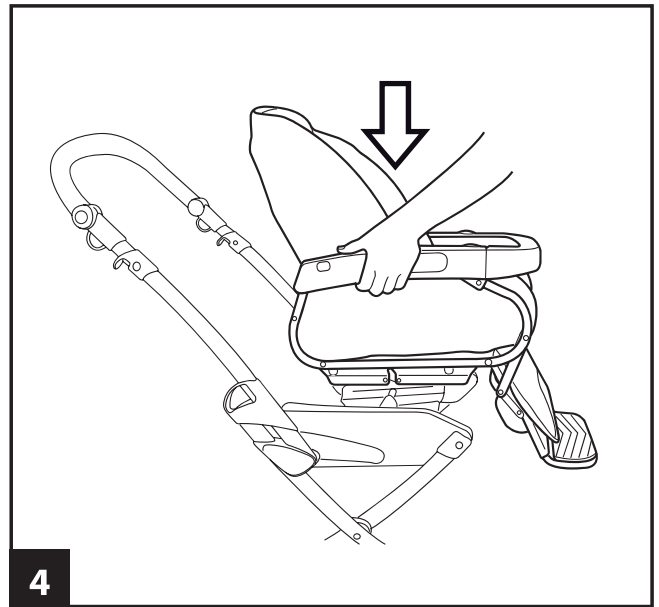
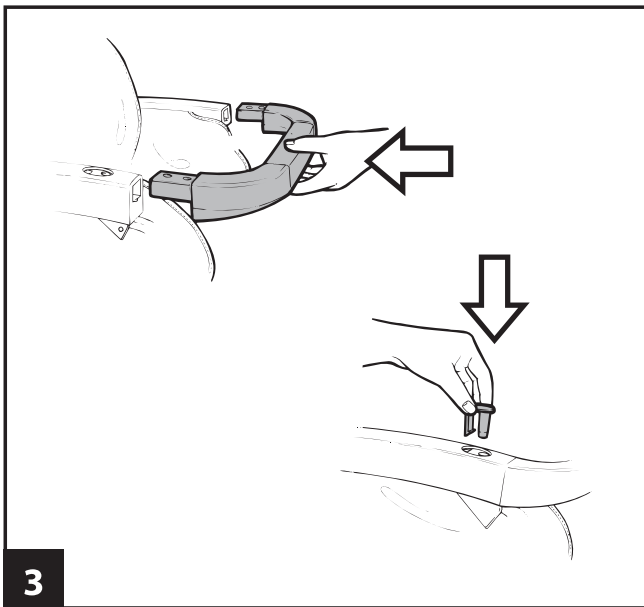
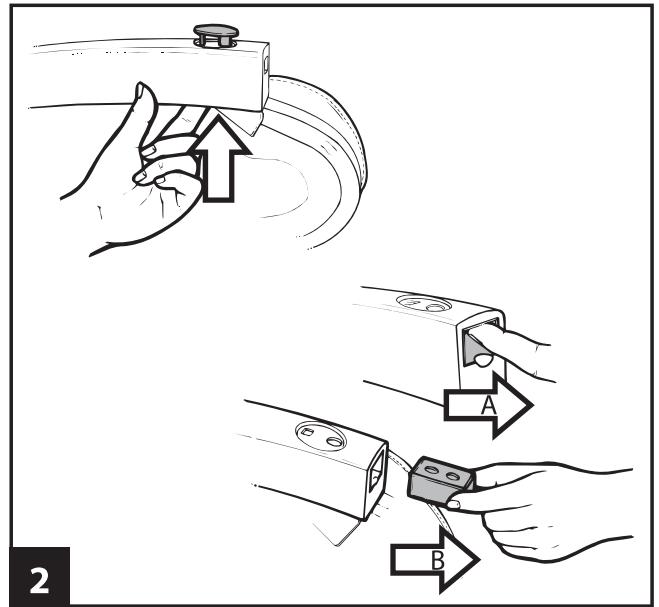
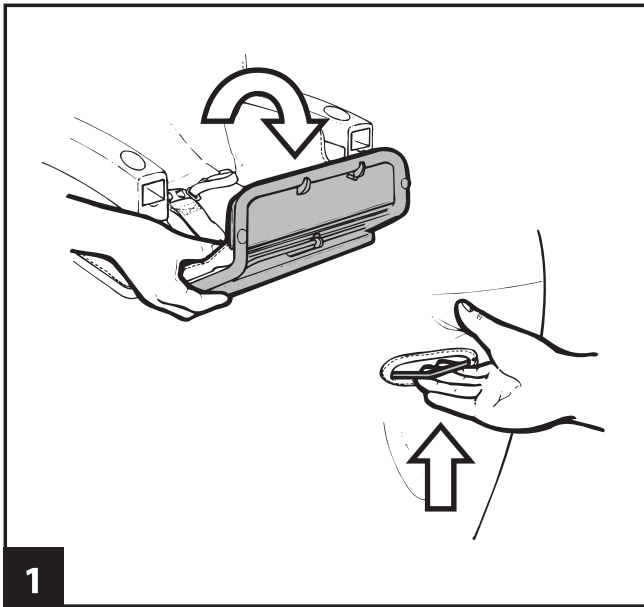
**U.S.A. / CANADA / AUSTRALIA**

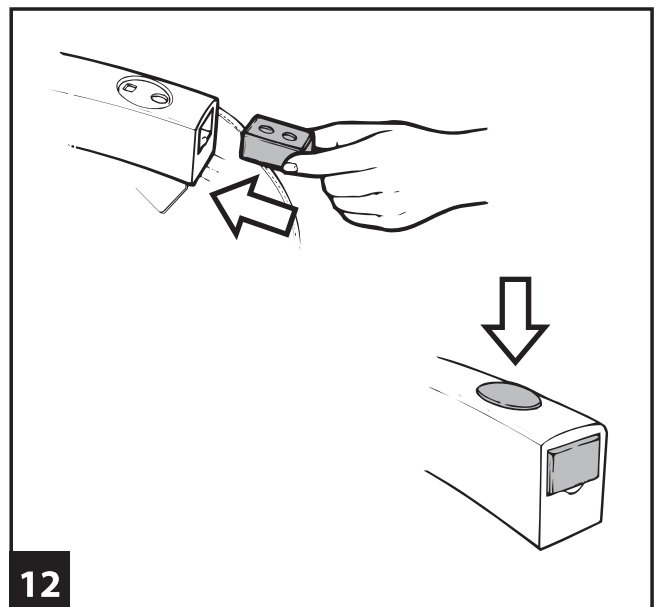
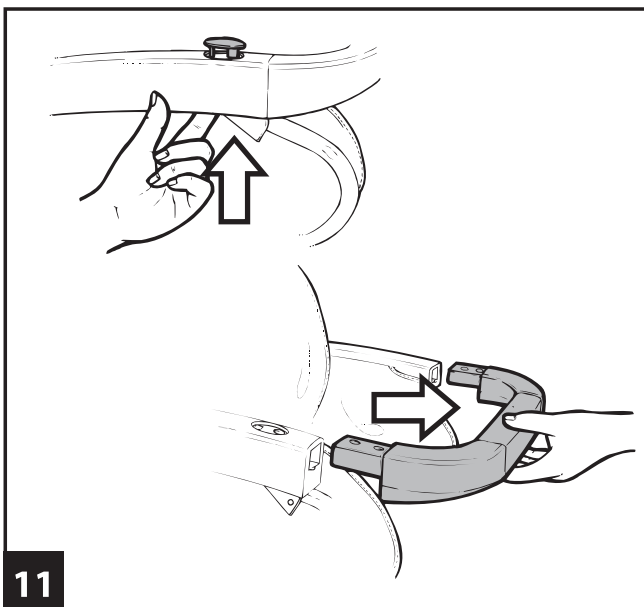
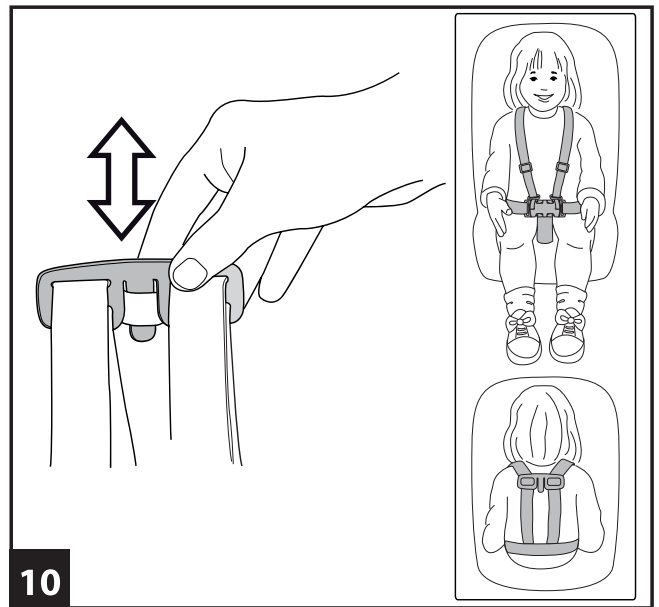
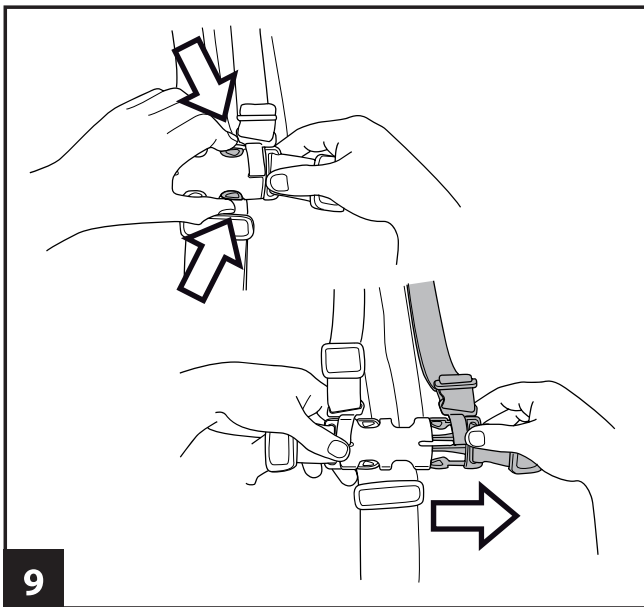
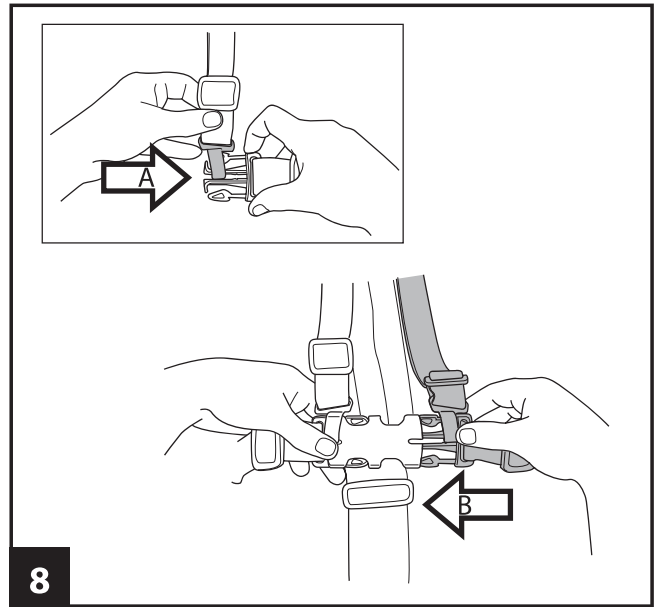
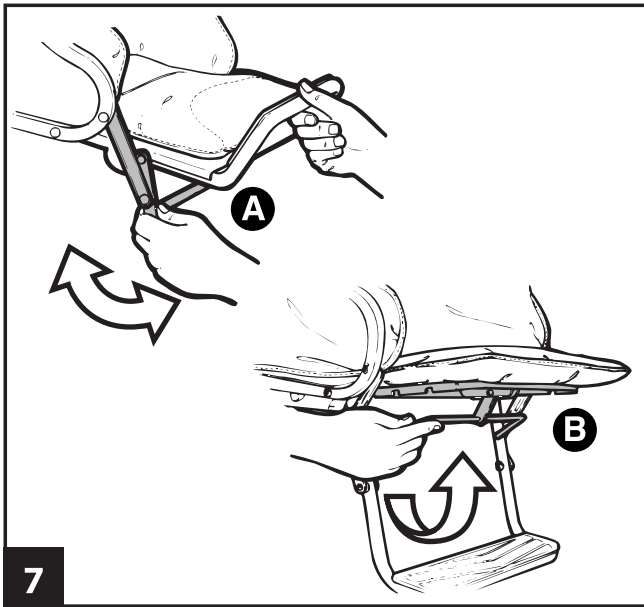
EN Instructions for use

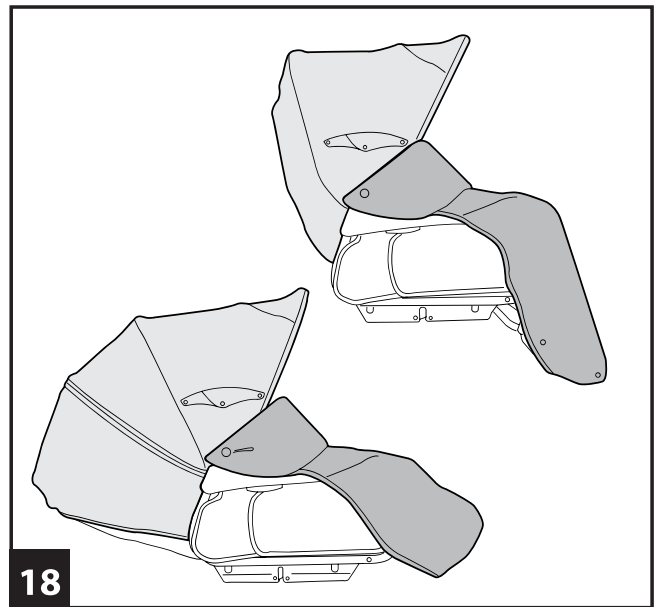
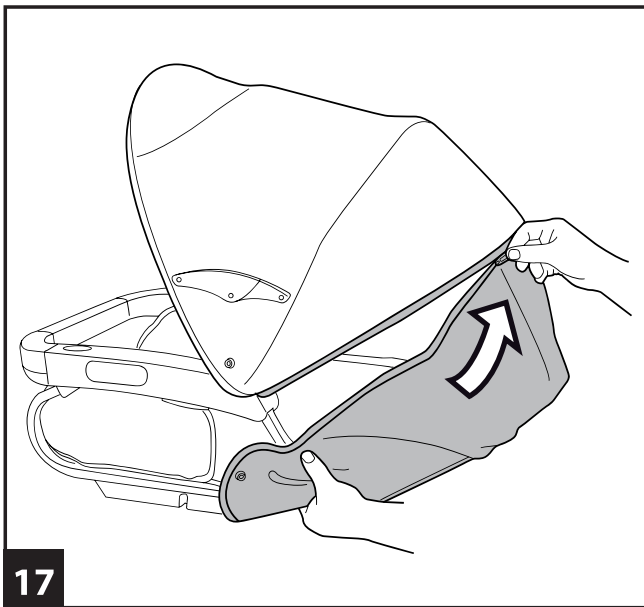
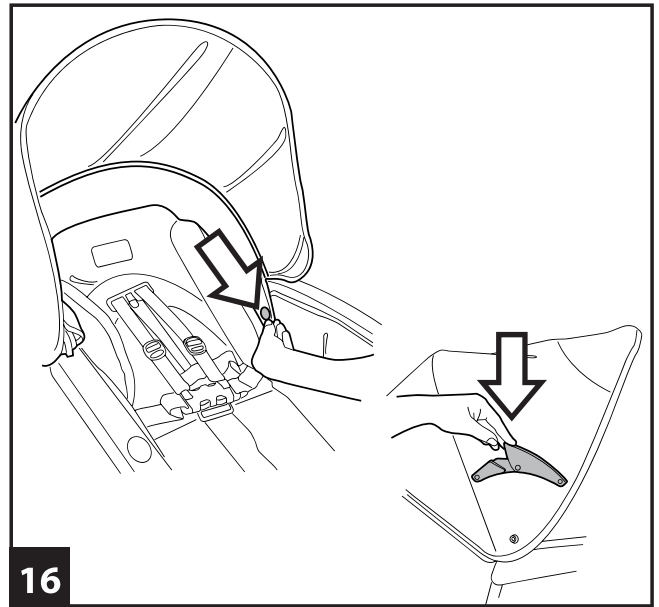
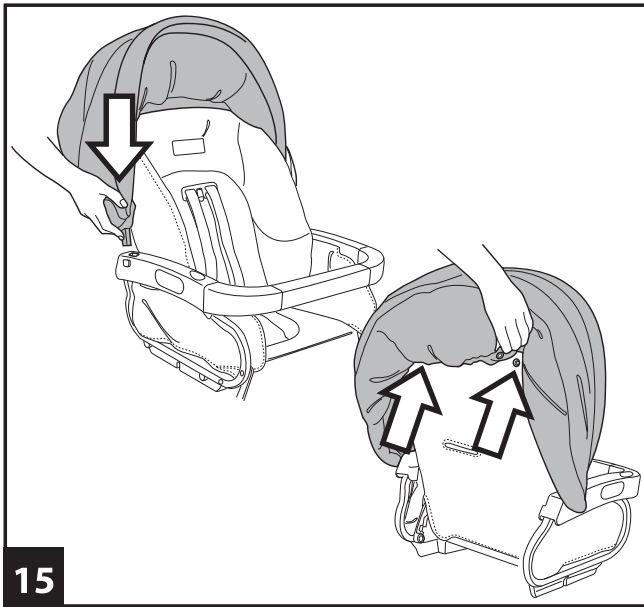
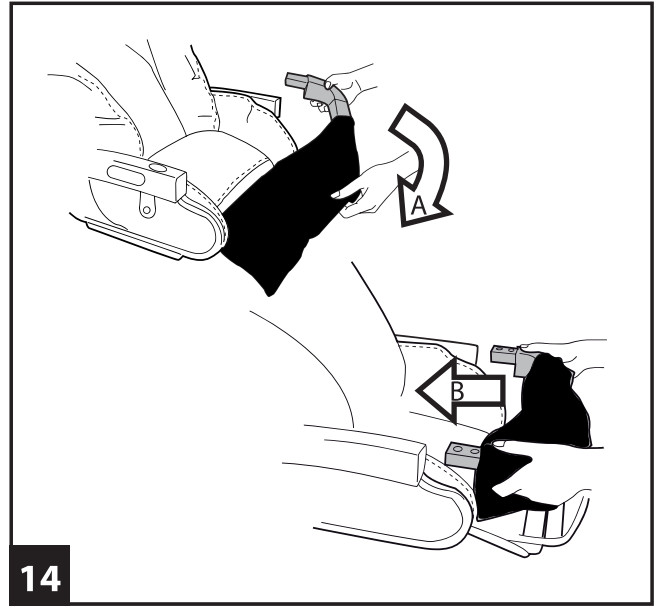
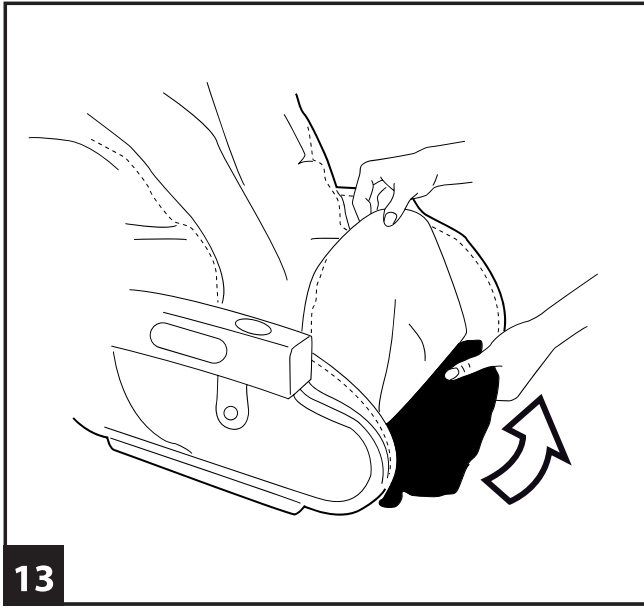
ES Instrucciones de uso

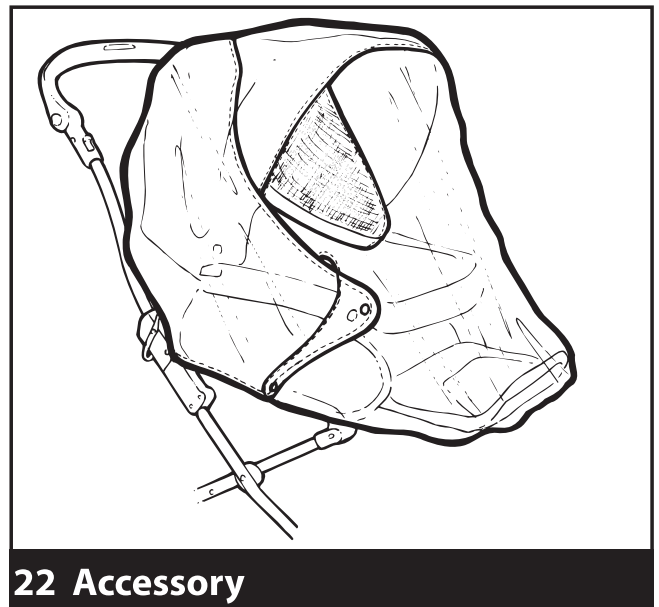
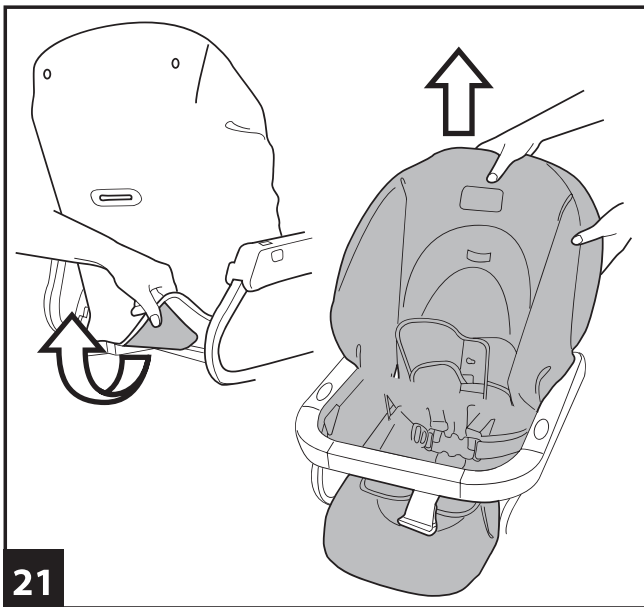
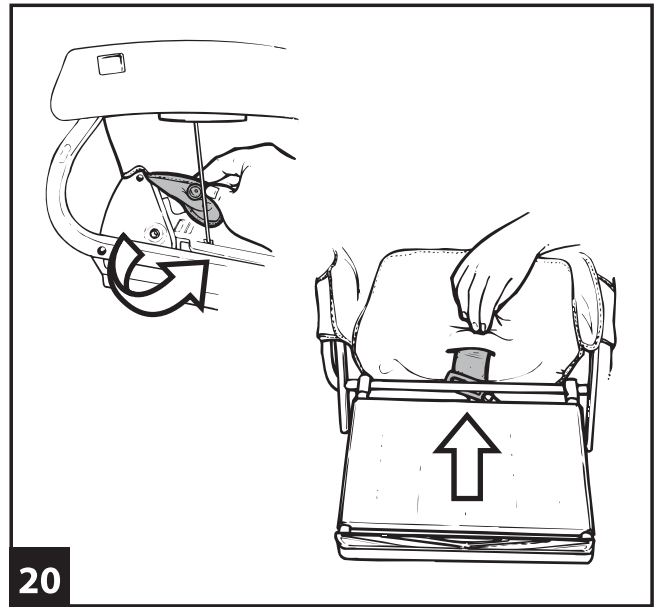
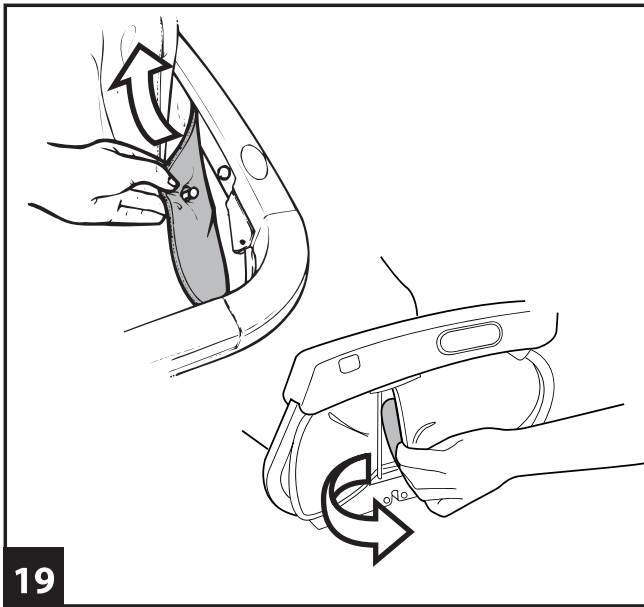
FR Notice d'emploi

**seat unit**

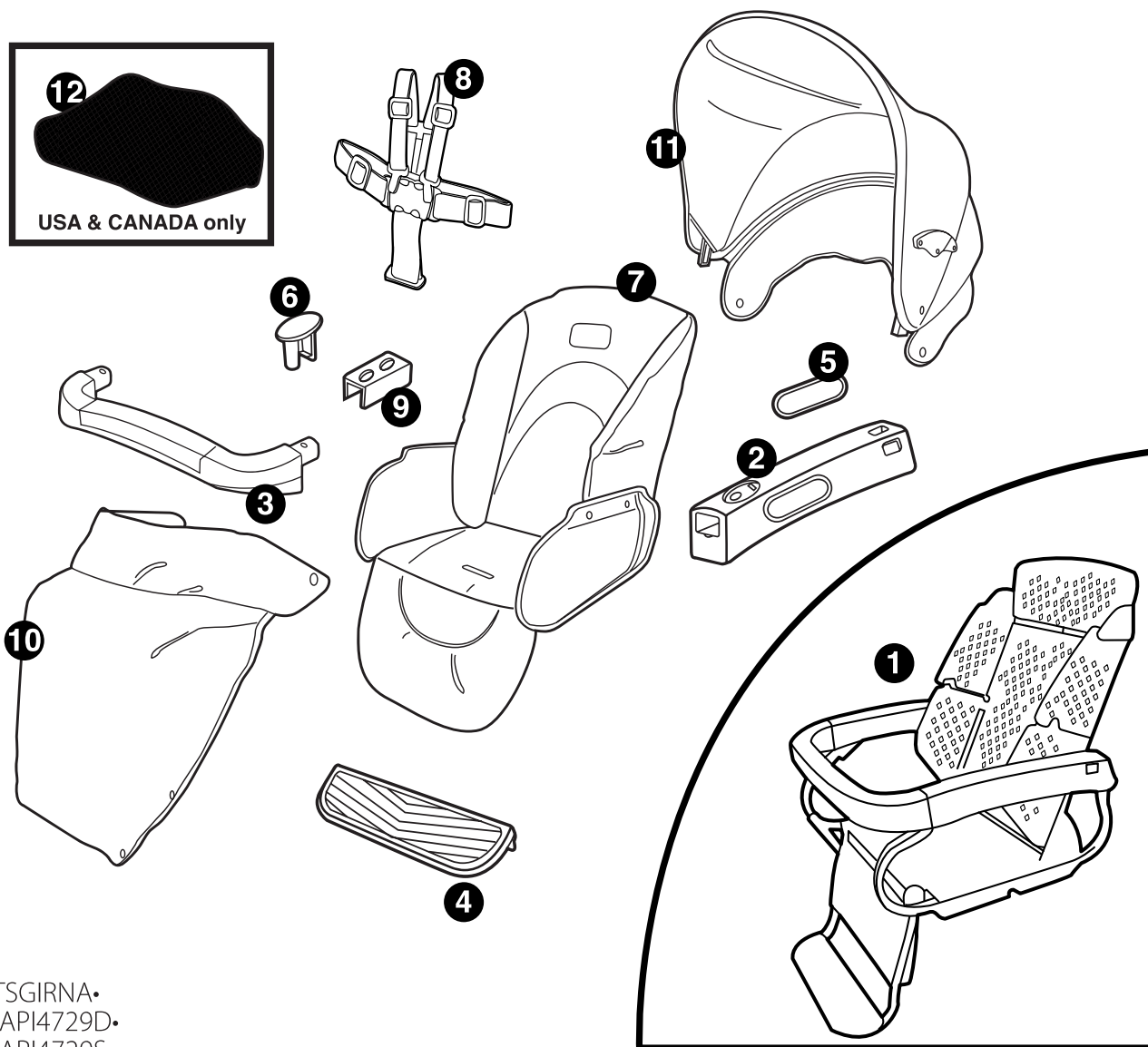








# seat unit



- 1 ITSGIRNA•
- 2 SAPI4729D•  
SAPI4729S•
- 3 SAPI6461•
- 4 SPST0521•
- 5 SPST5041J•
- 6 SPST4130•
- 7 ESGS00•
- 8 MUCI5P14•
- 9 SPST4726•
- 10 ERCOGS•
- 11 BRCADS• (ONLY Duetto-Triplette Seats Unit)
- 12 ERSBDS00-RE01M

EN• Spare parts available in different colours to be specified when ordering.  
 ES• Repuestos disponibles en otros colores que se especificarán en el pedido.  
 FR• Pièces de rechange disponibles en plusieurs couleurs à spécifier dans la demande.

**Thank you for choosing a Peg-Pérego product.**

## **⚠ WARNING**

- **IMPORTANT: READ THESE INSTRUCTIONS CAREFULLY AND KEEP THEM FOR FUTURE REFERENCE. FAILURE TO FOLLOW THESE INSTRUCTIONS COULD PUT THE CHILD'S SAFETY AT RISK.**
- THIS PRODUCT IS DESIGNED FOR CHILDREN WHOSE MAXIMUM WEIGHT IS 45 POUNDS (20 KG) AND WHOSE MAXIMUM HEIGHT IS 43 INCHES (110 CM). THIS SHOPPER BASKET IS DESIGNED TO CARRY A MAXIMUM WEIGHT OF 11 POUNDS (5 KG). ANY CUPHOLDER EVENTUALLY PROVIDED WITH THIS UNIT IS DESIGNED TO CARRY A MAXIMUM WEIGHT SPECIFIED ON THE CUPHOLDER ITSELF. ANY POACH OR POCKET PROVIDED WITH THIS UNIT IS DESIGNED TO CARRY A MAXIMUM WEIGHT OF 0.44 POUNDS (0.2 KG).
- FAILURE TO FOLLOW MANUFACTURER'S SPECIFICATIONS OR USE OF ACCESSORIES OTHER THAN THOSE APPROVED BY THE MANUFACTURER MAY CAUSE THE UNIT TO BECOME UNSTABLE.
- AVOID SERIOUS INJURY FROM FALLING OR SLIDING OUT. ALWAYS USE COMPLETE 5 POINT SEAT BELT.
- NEVER LEAVE YOUR CHILD UNATTENDED.
- CHILD MAY SLIP INTO LEG OPENINGS AND STRANGLE. NEVER USE IN RECLINED CARRIAGE POSITION UNLESS FOOTREST ENCLOSURE IS FULLY INSTALLED/IMPLEMENTED.
- ALWAYS USE ALL THE BRAKES WHENEVER PARKED.
- TO AVOID SERIOUS INJURY, WHEN MAKING ADJUSTMENTS ENSURE THE CHILD'S BODY IS CLEAR OF ALL MOVING PARTS.
- ALL OPERATING AND ASSEMBLY

PROCEDURES SHOULD BE PERFORMED BY AN ADULT.

- DO NOT LIFT THE STROLLER BY GRIPPING THE FRONT BAR. THE FRONT BAR IS NOT DESIGNED TO WITHSTAND LOADS.
- ENSURE THAT THE STROLLER IS OPENED CORRECTLY AND LOCKED IN POSITION OF USE.
- CHECK TO MAKE SURE THAT THE CAR SEAT OR THE BABY CARRIAGE IS CORRECTLY FASTENED TO THE STROLLER (WHERE APPLICABLE).
- DO NOT DRIVE THIS PRODUCT AROUND STAIRS OR STEPS; CARE MUST BE TAKEN IF UNIT IS USED ON STAIRS OR ESCALATORS.
- DO NOT USE THE PRODUCT IF IT HAS BROKEN OR MISSING PARTS.
- DO NOT USE NEAR FIRE OR EXPOSED FLAME.
- NOTICE: THIS ARTICLE MEETS OR EXCEEDS ALL REQUIREMENTS COVERED IN ASTM F833 STANDARD AND LATEST REVISIONS.

## **instructions for use**

### CARRIER SEAT

- **PrimoGiro Seat Unit:** the carrier seat for the PrimoNido bassinet unit. This seat comes with a cover only, since the hood from the PrimoNido bassinet unit can be used with the seat once the baby no longer uses the bassinet unit. The hood can also be ordered separately.
- **Duette and Triplette Seat Unit:** the carrier seat for the Duette and Triplette twin carriages. This seat comes with a cover and a hood with a zipper that can also be used as a canopy.

### SEAT FITTING

1. Fold back the footrest and raise the backrest to the desired position by pulling the handle on the rear of the backrest, as shown in the figure.
2. To fit the front bar, remove the plugs onto the armrests pushing from underneath and detach the squared bushes from the armrests.
3. Insert the front bar into the armrests and complete the fitting by replacing the plugs into the armrests.

### TO FIT AND REMOVE THE SEAT

Before fitting and removing the seats, always apply the brake.

4. To fit the seat to the frame, place it as shown in the figure and press down with both hands till it clicks. The seat can be mounted facing the

mother or outwards.

5. To remove the seat pull the Ganciomatic lever in the direction of arrow A and simultaneously press in direction of arrow B and pull the seat upwards.

#### TO ADJUST THE BACKREST

6. The seat backrest reclines to four positions. To raise or lower the backrest, pull up the lever and lock it in the desired position.

#### TO ADJUST THE FOOTREST

7. A: The footrest can be adjusted in two positions, high and low: The baby lies when the footrest is in the higher position and seats when it is in the lower position. To adjust the footrest, see the figure. B: The leg rest can be raised only as shown in the figure, leaving the footrest lowered.

#### SAFETY BELT

8. A: Make sure that the brace is properly inserted by pushing as shown in the figure. B: Fasten the belt as shown in the figure.
9. To unfasten the belt, press on the buckle sides and pull out the waist strap.
10. The new safety belt is now easier to fasten thanks to the "snap-open-and-shut" device. Before fastening the safety belt, attach the buckle to the backrest by inserting the tab through the special holder, as shown in the figure. After fastening the safety belt on your child, detach it from the backrest to allow the child more freedom of movement. The buckle must remain below the child's shoulders.

#### REMOVABLE FRONT BUMPER BAR

When the children grow up, you can remove the front bumper bar.

11. Remove the plugs from the armrests, pushing from underneath with one hand and detach the front bumper bar.
12. Insert the squared bushes into the armrests, taking care that the solid side faces outwards; complete the fitting replacing the plugs into the armrests.

#### BABY SAFE SYSTEM

13. The stroller is equipped with a Child Safety device that prevents the child from sliding forward out of the stroller when lying down. To mount the device, remove the front bar and take out the mesh from under the sack, as shown in the figure.
14. A: Slip the Child Safety mesh onto the front bar;  
B: Reattach the front bar to the stroller, as shown in the figure.

#### HOOD

15. To attach the hood, insert the hooks into the armrests on the seat and button it behind the backrest.

16. For the Duetto and Tripletto Seat Unit only: button the lower hood tabs to the inside of the seat, as shown in the figure. Lower the braces to tighten the hood.
17. For the Duetto and Tripletto Seat Unit only: the hood comes with a zipper. With the zipper open, the hood can be used as a canopy.
  - To remove the hood, press the red button on the armrest while pulling the hood attachment upward.

#### COVER

18. The cover can be attached when the hood is on the seat. Place the cover on the seat and button it to the hood. The cover comes with buttons to use with the footboard lowered.

#### REMOVABLE LINING

19. To remove the lining from the seat, loosen the sack from the armrests by opening the four hooks and lifting the side tabs out of the hooks, as shown in the figure.
20. Loosen the side buttons at the bottom, as shown in the figure. Slip the leg divider out from under the seat.
21. Slip the sack tab out from under the backrest, as shown in the figure. Remove the sack from the top, pulling it over the safety belt.

### accessory line

22. Cover All Rain Canopy: Rain canopy made of transparent PVC, covers the entire seat.
23. Diaper Bag: Bag with pad for changing baby's diaper. Fastens to the carriage.

### cleaning & maintenance

- Your product requires only minimal maintenance. Cleaning and maintenance operations must be performed only by adults.
- Be sure to keep all moving parts clean, lubricating them with light oil if necessary.
- Regularly clean the plastic parts with a damp cloth. Do not use solvents or similar products.
- Brush the fabric parts to remove dust.
- Protect the product against smog, water, rain and snow. Continued and extended exposure to sunlight can change the colours of many materials.
- Store the product in a dry area.
- To wash the lining, carry out the following instructions.



### assistance service

If parts of the product are lost or damaged, replace only with original Peg-Pérego spare parts. For any repairs, replacements, product information and the sale of original spare parts and accessories contact the Peg-Pérego Assistance Service:

USA:  
tel.: 800.671.1701  
fax: 260.471.6332  
Call us toll free: 1.800.671.1701

CANADA:  
tel.: 905.839.3371  
fax: 905.839.9542  
Call us toll free: 1.800.661.5050

[www.pegperego.com](http://www.pegperego.com)

Peg-Pérego may modify the products described in this publication at any time for technical or commercial reasons.

**ES\_Español**

**Le agradecemos haber elegido un producto Peg-Pérego.**

## **⚠ CUIDADO!!**

- **IMPORTANTE: LEER ATENTAMENTE ESTAS INSTRUCCIONES Y CONSERVARLAS PARA UNA FUTURA UTILIZACIÓN. SI NO SE SIGUEN ESTAS INSTRUCCIONES, SE PODRÍA ARRIESGAR LA SEGURIDAD DEL NIÑO.**
- ESTE PRODUCTO HA SIDO DISEÑADO PARA NIÑOS CON UN PESO MÁXIMO DE 20 KG Y UNA ALTURA MÁXIMA DE 110 CM. LA CESTILLA HA SIDO REALIZADA PARA SOPORTAR UN PESO MÁXIMO DE 5 KG. LOS POSIBLES PORTABEBIDAS QUE VAN CON ESTE PRODUCTO ESTÁN CONCEBIDOS PARA SOPORTAR EL PESO MÁXIMO ESPECIFICADO EN EL PORTABEBIDAS EN CUESTIÓN. CUALQUIER BOLSA ENTREGADA JUNTO AL PRODUCTO ESTÁ REALIZADA PARA SOPORTAR UN PESO MÁXIMO DE 0,2 KG.
- SI NO SE RESPETAN LAS INDICACIONES ESPECIFICADAS O SI SE USAN ACCESORIOS DIFERENTES DE LOS HOMOLOGADOS POR EL FABRICANTE, EL PRODUCTO PUEDE SER INESTABLE.
- PARA EVITAR LESIONES GRAVES POR CAÍDAS O SI ESCAPA EL NIÑO DE LA SILLA DE PASEO, USAR SIEMPRE UN CINTURÓN DE SEGURIDAD DE 5 PUNTOS COMPLETO.
- NO DEJAR NUNCA AL NIÑO SIN VIGILANCIA.
- EL NIÑO PODRÍA RESBALAR E INTRODUCIRSE EN LAS ABERTURAS DE LAS PIERNAS Y SOFOCARSE. NO UTILIZAR NUNCA EL COHECITO EN POSICIÓN RECLINADA SI NO SE HA INSTALADO/IMPLEMENTADO EL REPOSAPIÉS.
- USAR SIEMPRE TODOS LOS DISPOSITIVOS DE BLOQUEO CADA VEZ QUE LA SILLA DE PASEO NO ESTÉ EN

This document was created with Win2PDF available at <http://www.win2pdf.com>.  
The unregistered version of Win2PDF is for evaluation or non-commercial use only.  
This page will not be added after purchasing Win2PDF.